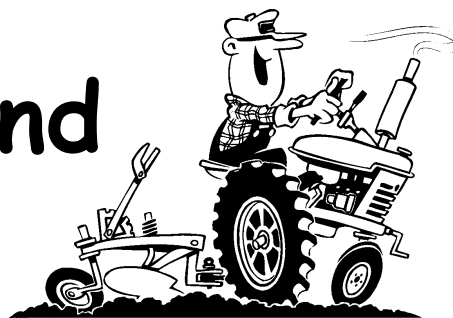


Cultivating Cumberland

April - 2013 VOL. 18, ISSUE 4



Inside this issue:

Plant & Pest Advisory	1
Food Safety Modernization Act	2-3
Packinghouse Water Sanitation Options & Table	3
NOFA Events	4
Water Quality Initiatives	5
Funds for Conservation Practices	6
Recycling Items Accepted	7
Pesticide Storage Requirements	7
Marketing and Communications Seminar	8
Updated Form I-9	8
Farmworker Health Coverage Webinar	9
Calendar of Important Events	9-10
Regularly Scheduled Meetings	11

Attachments:

Pesticide Storage Inventory List
Fire Department Sample Letter

Plant & Pest Advisory

Sign up to receive your FREE email version of the Plant & Pest Advisory newsletter by visiting: <http://plant-pest-advisory.rutgers.edu>

The email subscription offers the following features:

- Subscribers can customize exactly which topics they receive
- Each article has its own print/pdf button, creating a formatted copy, on demand, suitable for distribution
- Timely information is delivered without delay
- The information inside all articles is now searchable.
- Access to NEWA (Network for Environment and Weather Applications)
- Crop Insurance information
- Food Safety connection
- Direct information from the Plant Diagnostic Lab
- Pest Alerts
- Vegetable Crops
- Fruits
- Field and Forage
- Landscape, Ornamentals, Nursery and Turf
- The Calendar of events

All 2012 email subscribers have been automatically renewed and is now free of charge. Contributions of support can be made as directed on the website. US mail subscribers can continue to receive their editions, however, all are encouraged to move to the free online format. New US mail subscriptions are not being offered.

Food Safety Modernization Act Meredith Melendez and Wesley Kline

FDA Proposed Produce Food Safety Rule Q & A – Agricultural Water

The second FDA Proposed Produce Food Safety Rule Q & A conference call, coordinated by the Produce Safety Alliance, was held March 25. This conference call focused on agricultural water use in the proposed rule. To comment on these proposed rules go to <http://www.regulations.gov/#!docketDetail;D=FDA-2011-N-0921>. Remember the comment period ends May 16, 2013.

Here are the highlights of yesterday's conference call:

1. What is defined as agricultural water?

Agricultural water is defined as water that is intended to, or is likely to, contact covered produce or food-contact surfaces, including water used in growing activities (including irrigation water applied using direct water application methods -overhead, water used for preparing crop sprays and water used for growing sprouts) and in harvesting, packing and holding activities. Essentially if water used on the farm is going to or has the potential to contact a produce that is not exempt from this rule that water is subject to the requirements of this rule.

Water that does not have the potential or intent to come in contact with produce covered by this rule is considered indirect water and is not subject to this rule. Drip irrigation would be considered indirect.

2. How often should agricultural water be tested?

Municipal water does not need to be tested. A copy of the municipal water analysis is sufficient. Well water should be tested at the beginning of the production season and every three months when in production. For surface water, there are two options. Water that is pumped from a well into a holding pond would need to be tested once a month and water from streams, lakes, rivers, ponds, etc. would need testing at least every seven days.

3. What do you do if your generic E. coli water test results come back higher than they should?

This question was asked in regards to the Food Drug and Cosmetic Act rule which states that if a food product is contaminated with a human pathogen that is then deemed an adulterated crop. A crop that has been irrigated with water that is later shown to be above the accepted generic E. coli standard is not considered adulterated since generic E. coli is not a true indication of the presence of pathogenic E. coli. In this case the grower would need to stop using that water source, identify the problem and fix it or treat the water before he/she could begin using that water again.

4. When is it OK to use water with generic E. coli levels above the stated thresholds?

Many growers use water that has known levels of generic E. coli, including water from ponds, streams, snow melt, and other types of surface water. Drip irrigation and sub-surface methods of irrigation are acceptable forms of irrigation for surface water source water. The question was posed

regarding root vegetables, was sub-surface irrigation considered as not having contact with the produce? The FDA seeks comments from growers using these types of irrigation methods with root crops so that it can better understand production practices and therefore contamination risks.

Generic E. coli thresholds for agricultural water according to the FDA proposed rule: Average 5 sample mean of 126 CFU per 100 ml water and no more than 1 sample above 235 CFU per 100 ml water.

5. Is frost protection water included in this rule?

If the frost protection water is coming in contact with a harvestable product than yes, it is covered by this rule.

The next Q&A conference call on April 22nd at 11 AM will cover soil amendments. Anyone can participate by dialing toll-free 866-906-9888 and entering the passcode: 8140591. Each of these calls are recorded and are being made public online at producesafetyalliance.cornell.edu

Water sanitation options for the packinghouse

Water sanitation options in the packinghouse are becoming more of an issue. Some food borne illness outbreaks have been traced to packinghouses which had poor sanitation practices. Growers should be thinking about how they plan to treat their water if using dump tanks or reusing water during packing. Several options are available with differing considerations such as effectiveness, disposal and cost. Whichever material is selected monitoring is critical. Be sure to read all the instructions for use and following any monitoring recommendations from the manufacturer. Following is a table from the Ministry of Agriculture in Ontario Canada which gives options for water sanitation and factors to consider when selecting a material.

Water Sanitation Options: Considerations

	Availability of Test Strips	Monitoring Device: Oxidation Reduction Potential (ORP) Meters	Monitoring Device: Other	Requires Micro Verification	pH Range of Water During Treatment	Concentration Recommended	Effectiveness in the Presence of Organic Matter	Worker Safety (Risk)	Environmental Impact	Treatment Speed of Large Volumes of Water	Cost *	Unique Attributes
Chlorine (Food Grade)	✓	Works well	✓	✓	6.5 - 7.5	50-300 ppm	Limited	Medium: Irritant to skin, eyes, and throat.	Medium	Fast	1X	Odour. There continues to be some disposal concerns.
Chlorine Dioxide	✓	Works well	✓	✓	6 - 10	5 ppm	Effective	High: Irritant to skin, eyes, and throat.	Medium/High	Fast	15X	Most demanding form of Chlorine - must produce on-site. Odour.
Hydrogen Peroxide	✓	Challenging	✓	✓	6 - 8	3%	Effective	Medium: Irritant to skin, eyes, and throat.	Low	Medium	90X	Need to acidify to pH 6.
Peroxyacetic Acid	✓	Challenging	✓	✓	< 4	50-80 ppm	Effective	High: Severe irritant to skin, eyes, throat. Require ventilated area.	Medium	Medium/Fast	5X	Not ideal for sensitive produce. pH may need to be increased prior to disposal. Very strong odour.
UV	✗	Not Suitable	✓**	✓	NA	NA	Not Effective (must filter)	Low	Low	Slow	Varies based on facility	Ensure bulb is functional and clear of mineral deposits. Challenges with hard water.
Ozone	✗	Challenging	✓	✓	6 - 8	3 ppm	Limited (must filter)	Medium: Must have off-destruct device and detector(s).	Low	Slow	Varies based on facility	Fast oxidizer, however, delivery system reduces speed of large water volume sanitation.

* All cost is relative to Chlorine (Food Grade)

** This is a defector to make sure the bulb is working

For more information: Telephone: 1-866-641-3663 (FOOD) E-mail: advantage@ontario.ca

www.ontario.ca/omafra

NOFA-NJ Events

Don't miss out on these exciting events hosted by the Northeast Organic Farming Association-NJ:

April 8th Managing Soil Nitrogen Workshop

Cost: NOFA members \$40 and nonmembers \$46

Location: Duke Farms, 1112 Dukes Parkway West, Hillsborough, NJ

This workshop will give you an understanding of the dynamic life of nitrogen within the soil and the behavior of organic-approved soil nitrogen amendments. It will conclude with personal consultations with soil fertility expert Joe Heckman - bring your soil test results!

April 19th Food Safety Workshop (Please bring a laptop)

Cost: NOFA members 45 and Non-members \$55

Location: Mercer County Cooperative Extension, 930 Spruce St., Trenton, NJ

Part 1 we will learn about Good Agricultural Practices and how to implement them into your farm practices. The Food Safety Modernization Act will affect a number of growers in NJ in the coming years. We will examine this key piece of legislation to learn how it might affect your business.

Part 2 we will use the GAPs principles to develop a non-audit based farm food safety plan specific to your operation. The development of this plan will involve the creation of standard operating procedures, risk assessments and written farm policies detailing the daily, monthly and annual operations at the farm.

April 20th Poultry Processing Workshop

Cost: NOFA members: \$50 participating and \$45 Watch & Learn

Non-members: \$57 participating and \$52 Watch & Learn

Location: Hard Cider Homestead, 171 Cider Mill Rd., Ringoes, NJ

This poultry processing intensive workshop will give would-be chicken processors an in-depth view of the poultry handling, slaughter and breakdown process. Participants will receive a brief overview of the federal Poultry Production Inspection Act's Custom and Producer/Grower - 1,000 Limit exemptions, plus a list of NJ regulatory contacts that govern some aspect of on-farm poultry processing. This will be followed by a live, full-scale processing demonstration. Attendees can register as a "Watch & Learn" attendee or a "Participating" attendee (limited to 20). "Participating" attendees will have the opportunity to enact each step or specific steps, as they choose. Successful participation in this program will make you eligible to rent Matt's Mobile Processing Unit for your farm or homestead.

To register or obtain further details, visit: www.nofanj.org.

NRCS Announces Water Quality Initiative

Barbara Phillips, USDA, Natural Resources Conservation Service

Natural Resources Conservation Service (NRCS) can provide funding and advice to agricultural producers to install conservation practices such as cover crops, filter strips and terraces. Farmers in the Upper Cohansey River, Upper Salem River and Upper Alloway Creek Watersheds in Salem and Cumberland Counties are eligible to apply for assistance from NRCS through the National Water Quality Initiative that is offered through the Environmental Quality Incentives Program.

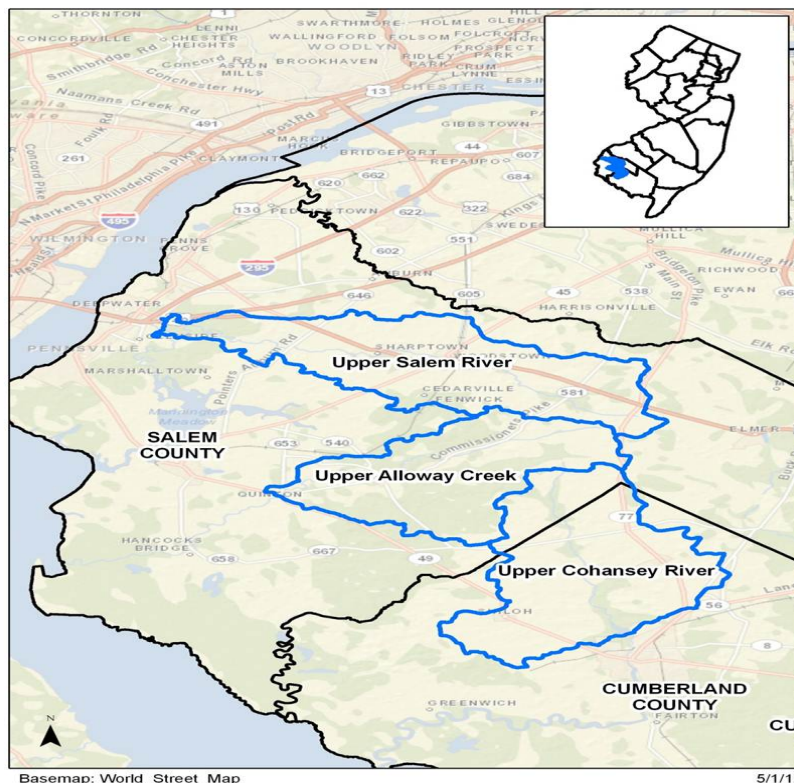
Applications received by April 19, 2013, will be considered for funding this year.

“We are pleased to offer this opportunity and continue the effort that was initiated here last year,” State Conservationist Carrie Mosley said. Through the help of local partnerships and state water quality agencies, NRCS in New Jersey selected these three watersheds that have documented phosphorus, bacteria, and sediment impairments, which may be caused by soil erosion, exposed soil, and lack of riparian buffers and filter strips. Reducing agricultural runoff by implementing conservation practices on agricultural lands can help reduce phosphorus, bacteria, and sediment inputs.

The goal of the initiative was to select watersheds with a high percent of agricultural land with known water quality issues,” Mosley said. “By focusing our efforts in these priority watersheds, we can have a positive impact on water quality.” The Upper Cohansey watershed has 68% of its land area in agriculture, the Upper Salem is 65% agriculture, and the Upper Alloway Creek has 41% of its land area in agriculture.

Application for the program can be made at the Natural Resources Conservation Service in Woodstown (51 Cheney Road, Suite 2, Woodstown, NJ 08098, ph: 856-769-1126 ext. 3) or in Vineland (Building 5, Suite A, 1318 South Main Road, Vineland NJ 08360 ph: 856-205-1225). Information about the program is available online at <http://www.nj.nrcs.usda.gov/programs/eqip/NWQI.html>.

NJ 2013 Water Quality Initiative



Rutgers Cooperative Extension has funds for conservation practices in the Upper Cohansey watershed

Salvatore Mangiafico, Rutgers University

The area includes portions of Upper Deerfield, Hopewell, Alloway, and a small area of Upper Pittsgrove and Stow Creek. It is shown in yellow on the map below.

Eligible applicants must:

- Be located within the Upper Cohansey River Watershed
- Be on land currently in agricultural usage, including cropland, nursery, pasture, sod farms, livestock
- Propose a conservation measure known to reduce erosion or protect water quality

Examples of conservation practices that can receive funding:

- Filter Strips and Grassed Waterways
- Stream Buffers
- Soil Erosion Prevention
- Irrigation Systems
- Tailwater Recovery
- Cover Crops
- Nutrient Management Plans and Actions

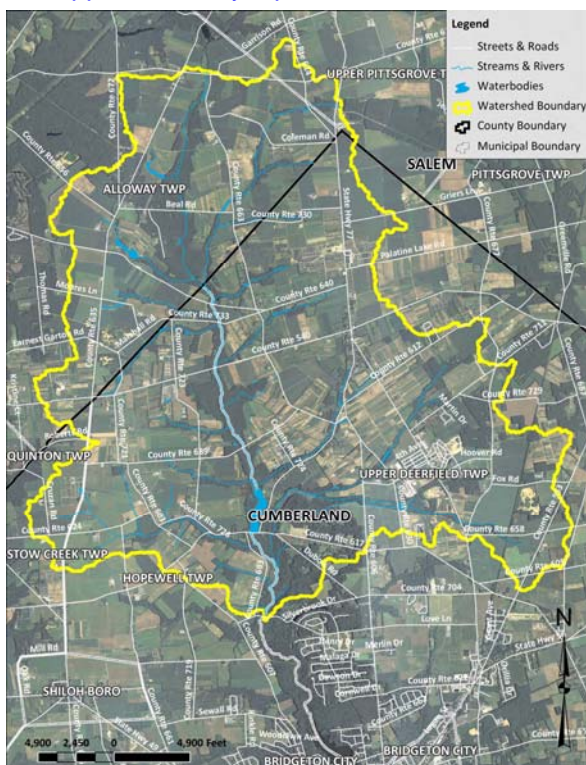
Funds can be used to complement NRCS or other funding, or be the sole-source of funds for some projects.

For more information and program contacts:

<http://www.water.rutgers.edu/Projects/UpperCohanseyImplementation/Mini-Grant.html>

For larger map:

http://www.water.rutgers.edu/Projects/UpperCohanseyImplementation/UCRW_Watershed_Roads.pdf



More Recycling Items

The Cumberland County Improvement Authority has agreed to accept for recycling the following items: nursery pots, cell packs and trays.

Small quantities of the material (do not bring tractor trailer loads) will be accepted for FREE **ONLY** during the scheduled pesticide container recycling events. Any other time, the growers/landscapers will be charged the full tipping fee—**no exceptions**. The plastic must be free of plant material and a majority of the dirt must be knocked out of the container. Usually, tapping the back of the piece will accomplish this. A thin layer of dirt is permissible but excessive dirt or plant material could result in rejection of the load.

These items will only be accepted at the following location:

Cumberland County Solid Waste Complex
169 Jesse Bridge Road (off Route 55, ext 29)
Deerfield, New Jersey

On the following dates:

Friday, May 17th
Friday, June 21st
Friday, July 19th
Friday, August 16th
Friday, September 20th
Friday, October 18th
Friday, November 15th

Any questions should be directed to: Karen Kritz, Agricultural Economic Department, NJ Department of Ag, 609-984-2506; fax 609-341-3212 or email: Karen.kritz@ag.state.nj.us

Fire Department Pesticide Requirements

NJAC 7:30-9.5(b)

N.J.A.C. 7:30-9.5(b) Any person required to be a licensed pesticide applicator or dealer who stores any pesticide shall maintain a list of the pesticides stored or likely to be stored during the license year and shall annually send a copy of this list with an explanatory cover letter to the local fire company along with a written description or diagram depicting the exact location of the area on the property where the pesticide is stored; provided that the provisions of this subsection shall not apply to individuals who are storing pesticides for their personal use on their private residence or persons who are storing pesticides for less than seven calendar days at loading or application sites in connection with their use.

1. The list shall be updated and sent to the local fire company each year by May 1.
2. The list shall be kept at a location which is separate from the actual storage site.
3. The cover letter shall explain that this list has been sent pursuant to *N.J.A.C. 7:30-9.5(b)*.
4. A copy of each year's cover letter shall be kept on file for three years and shall be provided immediately upon request by the Department.

A sample "Inventory List" and "Letter" are attached to this newsletter.

Marketing & Communications Seminar

On April 24 and 25, successful communicators and business leaders will partner with Rutgers Food Innovation Center (FIC) staff to present a two-day seminar on the basics of marketing and communications for food business owners. Scheduled to be held at FIC in Bridgeton, NJ, the seminar will feature topics like pitching products to retailers, media relations, digital marketing, trade show and events, packaging and labeling, visual merchandising, food service marketing, social media, website development, and content marketing.

Among the New Jersey communicators and business leaders are:

- Peter Genovese, Feature Writer, Star-Ledger
- Bob Sickles, Owner, Sickles Market
- Cheryl Williams, Vice President, Digital Commerce and Innovation, Wakefern
- Jonathan Carl Raduns, Consultant, Visual Food Merchandising
- Brent Sonnek-Schmelz, Director, Water Street Partners
- Robert Hiller, Managing Director, Imagineer Marketing/Monarch Communications
- Ira Berkowitz, Owner, Monarch Communications, Advertising, Marketing, Graphic Design
- James Caverly, Owner, Booskerdoo Coffee Company
- Reuben Canada, Owner and Creator, Jin-Ja
- Ed Hitzel, Food Writer, Radio and TV host, Ed Hitzel Enterprises
- Leslie Gurland, President, LogoTech
- Adam Taylor, Owner, Splendor Design Group
- Nick Taranto, Cofounder, Plated.com
- Deborah Smith, Founder, JerseyBites.com
- Michael Dresner, CEO, Brand² Squared Licensing
- Christine Xenakis, Senior Account Supervisor, Edelman

To learn more about the seminar, contact Diane Holtaway, associate director of Client Services at the Rutgers Food Innovation Center, by email at holtaway@njaes.rutgers.edu or by phone at 856-459-1900, ext. 4514.

USCIS I-9 Form

The USCIS I-9 Form (U.S. Citizenship and Immigration Services Employment Eligibility Verification) has been updated as of March 8, 2013.

All employers must complete Form I-9 to document verification of the identity and employment authorization of each new employee (both citizen and noncitizen) hired after November 6, 1986.

To obtain full instructions and Form I-9, visit: www.uscis.gov/files/form/i-9.pdf or call our office if you do not have computer access.

Farmworker Health Coverage Under the Affordable Care Act Webinar

Please consider attending this webinar and sharing with our agricultural colleagues. "Farmworker Health Coverage Under the Affordable Care Act (ACA)" (done by the National Migrant & Seasonal Head Start Collaboration Office). It will discuss the implication and impact of the ACA on migrant, seasonal, and undocumented agricultural workers and their families.

Tuesday, April 2, 2013 1:00 PM - 3:00 PM EDT

To register go to: <https://www3.gotomeeting.com/register/891773638>

Calendar of Important Events

📅 Indicates the newly added event since last calendar

April 2013

April 2

Indoor Plants, CCRCE, 291 Morton Ave., Rosenhayn, 9am-noon; \$20. Credits: 6 for category: 13, 3C & PP2. For info/to register, call 856-451-2800 x1.

📅 **April 2**

Farmworker Health Coverage Webinar, 1-3:00 EDT. To register: www3.gotomeeting.com/register/891773638

📅 **April 6**

Rain Barrel Workshop, RCE Cumberland County, 291 Morton Ave., Rosenhayn; 9-11:00 a.m., \$40 includes instruction and materials. To register or for info call 856-451-2800 x1.

📅 **April 8**

Soil Nitrogen: Managing the Cycle, Duke Farms, 1112 Dukes Parkway West, Hillsborough, NJ. NOFA members \$40; nonmembers \$46. For more info call 908-371-1111

April 9

Structural and Household Pests, RCE Cumberland County, 291 Morton Ave., Rosenhayn; 9-noon; \$20. Credits: 6 cat. 7A. For info or to register, call 856-451-2800 x1.

April 10, 11 & 12

HACCP Certification, Rutgers Food Innovation Center, Bridgeton, NJ. For info contact Donna Schaffner at 856-459-1900 x4528 or email: DFSchaffner@NJAES.Rutgers.edu

April 16

Plant Diseases, RCE Cumberland County, 291 Morton Ave., Rosenhayn; 9am-noon; \$20. Credits: 6 for category 13, 3A & PP2. For info or to register, call 856-451-2800 x1.

📅 **April 19**

Farm Food Safety: What Every Farmer Needs to Know, Mercer County Cooperative Extension, 930 Spruce St., Trenton, NJ. NOFA members \$45; non-members \$55. For info call 908-371-1111 x4.

📅 **April 20**

On-farm Poultry Processing, Hard Cider Homestead, 171 Cider Mill Rd., Ringoes, NJ. NOFA members: participate \$50; watch \$45; non-members: participate \$57; watch \$52. Info call 908-371-1111 x3 or email: jcook@nofanj.org

April 23

Small Fruit, Happy Valley Berry Farm, 187 Buckhorn Road, Bridgeton; 9-noon; \$20. Registration is required by April 19th. Info or to register, call 856-451-2800 x1.

📅 **April 24 & 25**

Marketing Seminar, RFIC, Bridgeton. Call Diane Holtaway 856-459-1900 or email: holtaway@njaes.rutgers.edu

April 30

Pesticide Safety, CCRCE, 291 Morton Ave. Rosenhayn; 9-noon; \$20. Credits: 6 CORE. Info/to register, call 856-451-2800 x1.

April 30-May 2

HACCP Cert. Classes, Food Safety Summit, Baltimore, MD. For info contact Donna Schaffner at 856-459-1900 x4528 or email: DFSchaffner@njaes.rutgers.edu

May 2013**May 7**

Landscape Design, RCE Cumberland County, 291 Morton Ave., Rosenhayn; 9-noon; \$20. For info or to register, call 856-451-2800 x1.

May 14

Turf Culture, RCE Cumberland County, 291 Morton Ave., Rosenhayn; 9am-noon; \$20. For more info or to register, call 856-451-2800 x1.

May 15, 16 & 17

Seafood HACCP Certification Class, FIC, Piscataway, NJ. For info contact Donna Schaffner at 856-459-1900 x4528 or email: DFSchaffner@njaes.rutgers.edu

May 17

Plastic Pesticide Container Collection Day, CC Solid Waste Complex, 169 Jesse Bridge Road, Deerfield, NJ; 9-noon. 1 CORE issued to license holders.

May 21

Turf Pest Management, CCRCE, 291 Morton Ave., Rosenhayn; 9am-noon; \$20. Recertification credits: 6 each for category 13, 3B & PP2. For info or to register, call 856-451-2800 x1.

June 2013**June 5, 6, 7**

HACCP Certification, Rutgers Food Innovation Center, Bridgeton, NJ. For info contact Donna Schaffner at 856-459-1900 x4528 or email: DFSchaffner@njaes.rutgers.edu

July 2013**July 11-13**

HACCP Certification, IFT Annual Meeting, Chicago, IL. For info contact Donna Schaffner at 856-459-1900 x4528 or email: DFSchaffner@njaes.rutgers.edu.

November 2013**November 13-14**

Pacific Northwest Vegetable Assoc. Conf. & Trade Show, Three Rivers Conv. Ctr, Kennewick, Washington. For info call 509-585-5460 or visit: www.pnva.org

December 2013**December 2-4**

Washington State Hort. Assoc. Annual Mtg, Wenatchee, Wash. Info call 509-665-9641 or visit: www.wahort.org

December 4-7

Joint NCSA/NASGA Conf., Sheraton Imperial Hotel, Durham, N.C. For info email: info@ncstrawberry.com or visit: www.ncstrawberry.com

December 6

Haygrove Owners Conference. For info call 717-492-4955 or visit: www.tunnelbuzz.com

REGULARLY SCHEDULED MEETINGS

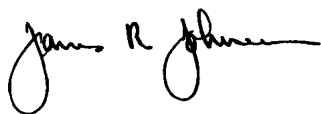
✓ Indicates meeting will be held at RCE of Cumberland County

<p>✓</p> <p>Pesticide Certification Exam Schedule—Cumberland County 291 Morton Avenue Millville, NJ 08332 (Between Rosenhayn & Carmel)</p> <p><u>2013</u></p> <p>Apr 3 May 1 Jun 5 Sept 25 Oct 23 Nov 6 Dec 18</p> <p>To Register call 609-984-6614 For directions call 856-451-2800</p> <p>*****</p>	<p>✓</p> <p>Cumberland County Agriculture Development Board 291 Morton Avenue Millville, NJ 08332 (Between Rosenhayn & Carmel)</p> <p><u>2013</u></p> <p>Apr 10 May 8 Jun 12 Jul 10 Aug 14 Sept 11 Oct 9 Nov 13 Dec 11</p> <p>Reg. Meetings start at 7 p.m. Call DeAnn at 856-453-2211</p> <p>*****</p>	<p>✓</p> <p>Cumberland County Board Of Agriculture 291 Morton Avenue Millville, NJ 08332 (Between Rosenhayn & Carmel) 7 pm meetings</p> <p><u>2013</u></p> <p>Apr 18 May 16 Sept 19 Oct 17 Nov 21 Dec 19</p> <p>For info call Shirley Kline, President 856-685-3784</p> <p>*****</p>
-------------------------------------------------------------------------------------------------------------------------------------------------------------------------------------------------------------------------------------------------------------------------------------------------------------------------------------------------------------------------------	-------------------------------------------------------------------------------------------------------------------------------------------------------------------------------------------------------------------------------------------------------------------------------------------------------------------------------------------------------------------------	------------------------------------------------------------------------------------------------------------------------------------------------------------------------------------------------------------------------------------------------------------------------------------------------------------------------------------------------

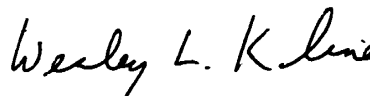
**Cumberland County Improvement Authority (CCIA)
Pesticide Container Recycling**
9:00 a.m. to 12 Noon
Cumberland County Solid Waste Complex
169 Jesse's Bridge Rd. (located off Route 55 Exit 29)
Deerfield Township, New Jersey
Questions? Call Karen Kritz, NJ Dept. of Ag 609-984-2506

May 17 June 21 July 19
Aug 16 Sept 20 Oct 18 Nov 15

Sincerely,



James R. Johnson
Agricultural Agent
Nursery Management Commercial
Internet: jjohnson@njaes.rutgers.edu



Wesley L. Kline, Ph.D.
Agricultural Agent
Vegetable & Herb Production
Internet: wkline@njaes.rutgers.edu

Pesticide User Responsibility: Use pesticides safely and follow instructions on labels. The user is responsible for the proper use of pesticides, residues on crops, storage and disposal, as well as damages caused by drift.

Use of Trade Names: Trade names are used in this publication with the understanding that no discrimination is intended and no endorsement is implied. In some instances the compound may be sold under different trade names, which may vary as to label.

Have you visited the Cumberland County website for the Present and/or past issues of "Cultivating Cumberland"? It's a great resource for information and dates.....

<http://Cumberland.njaes.rutgers.edu/>

Public Notification and Non-discrimination Statement

Rutgers New Jersey Agricultural Experiment Station Cooperative Extension educational programs are offered to all without regard to race, religion, color, national origin, ancestry, age, sex, sexual orientation, gender identity and expression, disability, atypical hereditary cellular or blood trait, marital status, civil union status, domestic partnership status, military service, veteran status, and any other category protected by law. Rutgers Cooperative Extension encourages individuals with disabilities to participate in its programs and activities. If you need special accommodations, have questions about physical access, or require alternate means for program information, please contact your local Extension Office. Contact the State Extension Director's Office if you have concerns related to discrimination, 732-932-5000, ext. 584.

NONPROFIT ORGANIZATION
U.S. POSTAGE PAID
VINELAND, NJ
PERMIT NO. 186

Cooperative Extension of Cumberland County
Extension Education Center
291 Morton Avenue
Millville, NJ 08332-9791

RUTGERS
New Jersey Agricultural
Experiment Station

Pesticide Storage Inventory List

Name or Establishment: _____

Date Updated: _____

Brand Name	EPA Registration Number	Active Ingredient(s)	Amount

Date: _____

To: _____ Fire Department

From: _____

To Whom It May Concern:

Enclosed with this letter is a list of the pesticides I currently have stored or may store during the coming year. I am required by the New Jersey Department of Environmental Protection Pesticide Control Program regulation N.J.A.C. 7:30-9.5(b) to provide this list to the local fire department by May 1st each year.

My pesticide storage facility is located at:

The exact location of the storage area on the above property is (*either written description or diagram*):

Thank you for your time on this matter. Please contact me at _____ if you have any questions.

Sincerely,
