

Cultivating Cumberland

August - 2018 VOL. 23, ISSUE 8



Inside this issue:

Meeting for Fire Code Inspections on Ag Properties	1
Vegetable Twilight Meeting and Research Tour	2
NJ's Crop Acreage Counts	3
Deer Fencing Program Readied for Second Round	3
On Farm Readiness Review	4
Pesticide Container Recycling Locations	4
USDA to Survey Potato Growers	5
Permits to Operate Rural Microenterprise on Preserved Farmland	5
Calendar of Events	6-8
Regularly Scheduled Meetings	9
Website information	9
Attachments:	
NJNLA Summer Plant Symposium	
Get your farm FSMA Ready	
Spotted Laternfly	

Upcoming Meeting Regarding: Fire Code Inspections on Agriculture Properties

Michael Brent Hitchner, Jr.
City of Bridgeton Fire Department

NOTE: Growers should pay particular attention to these fire code inspections. They are being interpreted to include more buildings. This is your chance to find out what is included and to give an opinion.

The New Jersey Division of Fire Safety will be hosting a meeting at the Cumberland County Fire Academy on August 15th from the hours of 8:30 a.m. to 11:30 a.m. The Cumberland County Fire Academy is located at 601 Vineland Avenue, Bridgeton NJ. It is in Deerfield township between Nixon and Bridgeton Avenue. The topic of the meeting is Fire Code Inspections on Agriculture Properties. This informative meeting will benefit any Fire Code and/or Construction Officials. Since a head count is needed for the facility, please email your attendance to my email address, hitchnerm@cityofbridgeton.com

City of Bridgeton
Captain Michael Brent Hitchner, Jr.
Inspector/Investigator
Training Officer
Cell: 856-207-7398
Office: 856-451-4250
Email: hitchnerm@cityofbridgeton.com

Vegetable Twilight Meeting and Research Tour

Wednesday, August 22, 2018, 4:00 pm (meet at the shelter near the parking lot)
 Rutgers Agricultural Research & Extension Center
 121 Northville Rd., Bridgeton, NJ (Upper Deerfield)

Tomato tasting will be at the picnic shelter and the wagon tour will leave at 4:30 pm to visit the trials

Taste the new fresh market tomato breeding lines – Tom Orton, PhD, Specialist in Vegetables

Evaluation of Bell pepper varieties and breeding lines for Bacterial Leaf Spot and Phytophthora Blight Management – Wes Kline, PhD, County Agricultural Agent

Cover crop in watermelon, weed trials in cantaloupe, summer squash and cucumber – Thierry Besancon, PhD, Extension Weed Specialist for Specialty Crops

Basil downy mildew fungicide control trial – Andy Wyenandt, PhD, Specialist in Vegetable Pathology

Basil downy mildew variety trial featuring new Rutgers bred Varieties Devotion DMR, Obsession DMR, and Thunderstruck DMR – Andy Wyenandt, PhD, Specialist in Vegetable Pathology

Basil trial featuring an organic and conventional basil downy mildew control program with new Rutgers DMR lines vs downy mildew susceptible lines. – AJ Noto, Graduate Student, Department of Plant Biology

Basil downy mildew breeding and chilling tolerance trial update – Robert Mattera, Graduate Student, Department of Plant Biology

Sweet Corn demonstrating the differences/effectiveness of Non-Bt, Providence Bt, and Attribute II Bt varieties for resistance to Corn Ear Worm and Fall Army Worm – Joe Ingerson-Mahar, PhD, Vegetable IPM Coordinator

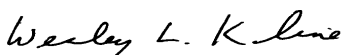
Evaluation of Yacon as a Potential New Specialty Crop for New Jersey Farmers – Rick VanVranken, Rutgers Cooperative Extension of Atlantic County and Peter Nitzsche, Rutgers Cooperative Extension of Morris County

Fresh market tomato breeding lines and tomato tasting – Tom Orton, PhD, Specialist in Vegetables

<u>Pesticide Credits Available</u>		<u>Units</u>
10	Demonstration & Research	2
1A	Agricultural Plant	10
PRIV	Private Applicator Exam	10



Michelle Infante-Casella
 Agriculture Agent, RCE
 Gloucester County



Wesley Kline
 Agriculture Agent, RCE
 Cumberland County



Richard VanVranken
 Agriculture Agent, RCE
 Atlantic County

New Jersey Crop Acreage Counts

Contact: Bruce Eklund 503-308-0404

TRENTON, NJ – New Jersey growers expect to harvest 118 thousand acres of soybeans, up from 99 thousand acres in 2017 and the highest since 1997.

New Jersey growers planted 75 thousand acres of field corn, and expect to harvest 67 thousand acres for grain. These estimates are both slightly down from last year.

Wheat producers expect to harvest 23 thousand acres, up from 17 thousand acres in 2017.

New Jersey growers expect to harvest 21 hundred acres of potatoes in 2018, up from 17 hundred in 2017.

New Jersey producers expect to harvest 134 thousand acres of hay in 2018, up from 115 thousand acres in 2017 and the highest since 1968. This includes 14 thousand alfalfa acres and 120 thousand acres of Other Hay.

New Jersey growers harvested 40 million pounds of apples from 2,400 acres in 2017. At \$.94 per pound, New Jersey growers earned the highest price of all states and almost three times the national average.

New Jersey blueberry growers harvested almost 44 million utilized pounds from 10,000 acres. The value of utilized production was almost \$84 million for 2017, the highest since 2011. Average price, at \$1.91 per pound was the highest on record. The previous high was \$1.67 in 2007.

Cranberry growers produced almost 450,000 utilized barrels, down from the all-time high of 646,000 barrels recorded in 2016. Harvested acres decreased 600 acres to 2,500. An estimated 5,000 barrels went to the fresh market. Nationally New Jersey cranberry growers were second in average yield and price.

New Jersey peach growers harvested 28,190 utilized tons from 4,700 acres. New Jersey ranked second nationally in peach production, utilized production, and value of utilized production. Value of utilized production was up sharply from 2016 to over \$44 million.

All reports are available electronically, at no cost, on the NASS web site at www.nass.usda.gov. Both national and state specific reports are available via a free e-mail subscription. To set-up this free subscription, visit www.nass.usda.gov and click on "National" or "State" in upper right corner above "search" box to create an account and select the reports you would like to receive.

Deer Fencing Program Readied for Second Round

SADC staff in June updated the Committee on progress to date under the first round of deer-fencing cost-share grants for preserved farms. Approximately \$456,000 had been approved for 32 eligible deer-fencing projects, six of which have been completed. Based on lessons learned and feedback from applicants, staff will revise the deer-fencing program policy to streamline the application process, clarify constructions specifications and address other issues in preparation for a second round of grants.

A total of \$500,000 for a second round of deer-fencing grants will be included in FY2019 appropriation recommendations that staff is expected to present to the Committee at its meeting in July. Questions? Contact Dave Clapp, SADC Conservationist, at David.Clapp@ag.nj.gov

On Farm Readiness Review

The on-farm readiness review (OFRR) was developed for fresh fruit and vegetable growers. It is part of the package to help growers prepare for an inspection which start taking place in 2019. The first step in the process is for growers to attend the Produce Safety Alliance training which we offer approximately 8 times a year. This training is required under the Produce Rule as part of the inspection process. Sixty-two growers have signed up for the On-Farm Readiness Review. There are still slots available so make the call! Why might a grower want to sign up:

- It is voluntary and free
- It helps align what you are doing to what's required in the rule
- It helps figure out what is missing
- It provides personalized discussion on the farm for food safety activities
- Notes taken on the farm remain the property of the farm
- It will improve your readiness for a Produce Safety Rule (PSR) inspection

The reviews are generally carried out by two people; one from the New Jersey Department of Agriculture and the other from Extension and take between 1.5-2.5 hrs. OFRRs cover the whole farm not just one commodity. There are difference sections to the review depending the type of activities i.e., if you pack in the field we will not talk about the packing house.

You can sign up by calling Charlotte Muetter at 856-839-3377 or charlottee.muetter@ag.nj.gov. She will ask you a series of questions, so we know areas to concentration on during the review. There is a flyer attached to this newsletter with more details.

Two Locations for Pesticide Container Recycling

- Pesticide Containers
- Nursery Greenhouse Film
- Agriculture Plastics, Irrigation Pipe and Drip Tape
- Plastic Nursery Pots, Trays, Flats
- Non-waxy Cardboard

Allied Recycling Incorporated

2658 Route 206
 Mount Holly, NJ 08060
 609-267-8923
 Fax – 609-267-3329
 Web – alliedrecyclingnj.com
 Email – info@alliedrecyclingnj.com
 Monday – Friday 6:00 am - 5:00 pm
 Saturday – 7am - 3:45pm

Rutgers Fruit Research Center

283 Route 539
 Cream Ridge, NJ 08514
 April 1, 2018 through October 31, 2018
 Hours: 9 am to Noon
 Monday- Friday

USDA to Survey Maryland and New Jersey Potato Growers

Harrisburg, PA – Beginning in late July, the Northeastern Regional Field Office of USDA's National Agricultural Statistics Service (NASS) will be conducting the Summer Potato Grower Inquiry.

The survey specifically targets potato growers in order to improve coverage of planted and harvested acres. In addition, data collected will be used to set yield, prices and value of production in Maryland, New Jersey, and other summer potato crop states throughout the nation.

NASS gathers the data for the survey online, by mail, phone and in-person interview. "The cooperation of potato farmers is crucial to ensure that your state's potato crop is accurately represented in national potato production statistics," explained King Whetstone, director of the USDA's NASS Northeastern Regional Field Office. "NASS safeguards the privacy of all responses and publishes only state- and national-level data, ensuring that no individual operation or producer can be identified," stated Whetstone.

NASS will compile and analyze the survey information and publish the results in the August 10, 2018 monthly Crop Production publication. The publication will be available on the USDA-NASS website at <https://www.nass.usda.gov/>. For more information on NASS surveys and reports, call the NASS Northeastern Regional Field Office at 1-800-498-1518.

Eligible Farmers Can Apply for Special Permit to Operate Rural Microenterprise on Preserved Farmland

Many Farmers who own preserved farms now have the new opportunity to apply for a special permit to operate a rural microenterprise on their land under new rules that also promote the conservation of barns and other historically and culturally significant farm structures, Agriculture Secretary Douglas H. Fisher announced today.

"There is a long tradition of farmers operating businesses that are compatible with agriculture to supplement farm income without diminishing their farms' focus on agriculture production," said Secretary Fisher. "These rules will enable eligible farmers to establish such businesses to strengthen the viability of their preserved farms, while providing economic incentive to protect important heritage structures and preserve New Jersey's agrarian history for future generations."

The State Agriculture Development Committee (SADC) developed and adopted the rules, which are effective June 4, 2018, pursuant to the New Jersey Rural Microenterprise Act (P.L. 2015, c. 275). The law permits two categories of microenterprises—customary rural activities and agricultural support services. Customary rural activities include businesses such as snow plowing, bed and breakfasts, bakeries, and woodworking and craft-based businesses. Agricultural support services include businesses such as veterinary practices, seed suppliers and tractor equipment repair shops.

Calendar of Important Events

✓ Indicates the newly added event since last calendar

August 2018

August 8

MidAtlantic Women in Agriculture: Understanding Credit and Credit Scores, Webinar series held 2nd & 4th Wednesdays each month at noon. Cost is free. To register visit: <https://www.eventbrite.com/e/2018-Wednesday-webinars-tickets>

August 20-24

Introduction to Food Science Course, New Jersey Institute for Food, Nutrition and Health, Room 101, 61 Dudley Road, New Brunswick, NJ; Registration for 5 days \$1,595 by 8/6; \$1,645 after. Breakfast and lunch will be provided. Check in time 8:30; class runs 9:00 a.m.-4:00 p.m. For more information call Suzanne Hills, Program Coordinator 848-932-7234.

August 22

MidAtlantic Women in Agriculture: An Overview of the Resource Stewardship Evaluation Tool, Webinar series held 2nd & 4th Wednesdays each month at noon. Cost is free. To register visit: <https://www.eventbrite.com/e/2018-Wednesday-webinars-tickets>

September 2018

✓ **September 11-22**

International Plant Propagator's Society Tour International Tour: Hosted by Eastern Region. Contact: Paul Cappiello, paul@yewdellgardens.org or Margot Bridgen, IPPS Executive Secretary/Treasurer, 1700 North Parish Dr., Southold, NY; 631-765-9638; ippser@gmail.com, <http://ena.ipp.org>

September 12

MidAtlantic Women in Agriculture: Soil Maps for Production Agriculture, Webinar series held 2nd & 4th Wednesdays each month at noon. Cost is free. To register visit: <https://www.eventbrite.com/e/2018-Wednesday-webinars-tickets>

✓ **September 17-19**

American Hort, Plug & Cutting Conference: 555 South McDowell Street, South Tower, Charlotte, NC, 28204; For young plant producers and growers to learn the newest and best strategies, technologies and techniques; Register at AmericanHort.org/Plug

September 21

CORE Training Program for the NJ Pesticide Applicators License, Extension Conference Center, 18 Ag Extension Way, New Brunswick, NJ; 12:30-4:30p.m. 6 CORE credits assigned for this class. Registration fee \$145.00. For more information call Carol Broccoli 848-932-7207

September 24-26

2018 United Fresh Washington Conference, 1901 Pennsylvania Ave NW #1100, Washington, DC 20006; Registration begins at 7:00 a.m. everyday; March on Capitol Hill: U.S. House & Senate Congressional Meetings on 9/25 at 2:30 - 5:30 p.m.; Tickets sold separately for United FreshPAC Reception & Dinner on 9/25 at 6:15 p.m. - 9:00 p.m. For more information contact Angela Tiwari, Director of Grassroots and Political Action 202-303-3416

September 26-27

Sensory Evaluation, University Inn & Conference Center, 178 Ryders Lane, New Brunswick, NJ. Registration \$945 by 9/12; \$975 after. Continental breakfast and deli buffet lunch provided. Day 1 check in 8:00 a.m.; class runs 8:30 a.m. - 4:30 p.m. For more information call Suzanne Hills, Coordinator 848-932-7234

September 26

MidAtlantic Women in Agriculture: Farm Recordkeeping, Webinar series held 2nd & 4th Wednesdays each month at noon. Cost is free. To register visit: <https://www.eventbrite.com/e/2018-Wednesday-webinars-tickets>

September 28

Making Sense of the Numbers: Statistics for Food Scientists, University Inn & Conference Center, 178 Ryders Lane, New Brunswick, NJ; 8:30 a.m. - 4:30 p.m. Check in time 8:00 a.m. Registration \$395 by 9/14; \$450 after. For more information call Suzanne Hills, Program Coordinator 848-932-7234

October 2018✓ **October 4**

Invasive Plant Symposium: Convened by the Connecticut Invasive Plant Working Group UConn Student Union, Storrs, CT. For more information visit www.cipwg.uconn.edu or call 860-486-6448

October 10

MidAtlantic Women in Agriculture: Smart Choice Health Insurance Basics, Webinar series held 2nd & 4th Wednesdays each month at noon. Cost is free. To register visit: <https://www.eventbrite.com/e/2018-Wednesday-webinars-tickets>

✓ **October 11-12**

BioControls Conference and Expo: Rochester Riverside Hotel, 120 E Main Street, Rochester, NY 14604

October 12-13

Fall Flower and Garden Fest, Truck Crops Experiment Station, 2024 Experiment Station Road, Crystal Springs, MS 39059; 9:00 a.m.-2:00 p.m.; For more information contact the Mississippi County Extension office, or call 601-892-3731.

✓ **October 19-22**

American Society of Landscape Architects (ASLA) Annual Meeting and Expo, Philadelphia, PA. For more information call 847-996-5829; email asla@experient-inc.com; or visit <https://www.aslameeting.com>

October 19

CORE Training Program for the NJ Pesticide Applicators License, Extension Conference Center, 18 Ag Extension Way, New Brunswick, NJ; 12:30-4:30p.m. Registration fee \$145.00. 6 CORE credits assigned for this course. For more information call Carol Broccoli 848-932-7207.

✓ **October 24**

2018 Petal It Forward: Join the nationwide effort to show others the positive impact flowers have on our emotional well being by incorporating Petal It Forward in your town. For more information visit www.safnow.org or email safnow.org/piform

October 24

MidAtlantic Women in Agriculture: Preparing Your Marketing Efforts for the Holidays, Webinar series held 2nd & 4th Wednesdays each month at noon. Cost is free. To register visit: <https://www.eventbrite.com/e/2018/Wednesday-webinars-tickets>

October 25

The Landscape Conference: Rutgers EcoComplex, 1200 Florence Columbus Rd., Bordentown, NJ 08505; Pesticide Credits assigned to this conference; More information coming soon. To register go to www.njnla.org; Call 609-291-7070 with questions

November**November 1**

Farm Lease Agreements: Webinar series held 2nd & 4th Wednesdays each month at noon. Cost is free. To register visit: <https://www.eventbrite.com/e/2018/Wednesday-webinars-tickets>

✓ **November 7-8**

Northeast Greenhouse Conference and Expo: Boxborough Regency Hotel, 242 Adams Pl, Boxborough, MA 01719; Come visit vendors at the trade show with three dedicated hours in each day of the program. Contact Karen Forbes at Karen@delaneymeetingevent.com or visit www.negreenhouse.org

✓ **November 7-8**

Growing Innovations: Las Vegas Convention Center, 3150 Paradise Rd, Las Vegas, NV 89109; A pioneering conference and exhibition that unites growers and advisors from across all specialty crops to address the most pressing on-farm challenges, from pre-production through post-harvest. Register at growing-innovations.com

November 14

Farm Lease Agreements: Webinar series held 2nd & 4th Wednesdays each month at noon. Cost is free. To register visit: <https://www.eventbrite.com/e/2018/Wednesday-webinars-tickets>

November 15-16

Pacific Northwest Vegetable Association Conference & Trade Show, Three Rivers Convention Center 7016 W Grandridge Blvd, Kennewick, WA 99336; Ticket sales start July 1, \$110-\$550, Register at <https://www.eventbrite.com/e/2018-pacific-northwest-vegetable-association-conference-and-trade-show-registration-43723580406>

November 28

GMO: Webinar series held 2nd & 4th Wednesdays each month at noon. Cost is free. To register visit: <https://www.eventbrite.com/e/2018/Wednesday-webinars-tickets>

November 28-30

National Council of Agricultural Employers Ag Labor Forum, Tropicana 3801 S Las Vegas Boulevard, Las Vegas, NV 89109, Register online at <http://ncaeonline.org/register/>. For more information call 202-629-9320

December**December 3-7**

2018 Irrigation Show, Long Beach Convention & Entertainment Center, 300 East Ocean Boulevard, Long Beach, California 90802; Call 703.536.7080 with questions.

REGULARLY SCHEDULED MEETINGS

✓ Indicates meeting will be held at RCE of Cumberland County

<p>✓</p> <p>Pesticide Certification Exam Schedule—Cumberland County 291 Morton Avenue Millville, NJ 08332 (Between Rosenhayn & Carmel)</p> <p><u>2018</u></p> <p>Sep 20 Oct 18</p> <p>To Register call 609-984-6614 For directions call 856-451-2800</p> <p>*****</p>	<p>Cumberland County Agriculture Development Board County Administration Bldg. Freeholder Room 164 W. Broad Street Bridgeton, NJ 08332</p> <p><u>2018</u></p> <p>Aug 14 Sept 11 Oct 9 Nov 13 Dec 11</p> <p>Reg. Meetings start at 7 p.m. Information call 856-453-2211</p> <p>*****</p>	<p>✓</p> <p>Cumberland County Board Of Agriculture 291 Morton Avenue Millville, NJ 08332 (Between Rosenhayn & Carmel) 7 pm meetings</p> <p><u>2018</u></p> <p>Sept 20 Oct 18 Nov 15 Dec 20</p> <p>For info call Hillary Barile, President 856-453-1192</p> <p>*****</p>
--	--	---

**Cumberland County Improvement Authority (CCIA)
Pesticide Container Recycling
9:00 a.m. to 12 Noon**

Cumberland County Solid Waste Complex
169 Jesse's Bridge Rd. (located off Route 55 Exit 29)
Deerfield Township, New Jersey

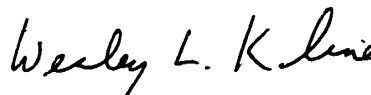
Questions? Call Division of Ag & Natural Resources, NJ Dept. of Ag 609-292-2242

Program in Cumberland County suspended until further notice.

Sincerely,



Salvatore S. Mangiafico, Ph.D.
County Agent II/Associate Professor
Environmental & Resource Management
Internet: Mangiafico@njaes.rutgers.edu



Wesley L. Kline, Ph.D.
County Agent II/Associate Professor
Vegetable & Herb Production
Internet: wkline@njaes.rutgers.edu

Pesticide User Responsibility: Use pesticides safely and follow instructions on labels. The user is responsible for the proper use of pesticides, residues on crops, storage and disposal, as well as damages caused by drift.

Use of Trade Names: Trade names are used in this publication with the understanding that no discrimination is intended and no endorsement is implied. In some instances the compound may be sold un-



Have you visited the Cumberland County website for the Present and/or past issues of "Cultivating Cumberland"? It's a great resource for information and dates.....

<http://Cumberland.njaes.rutgers.edu/>

Public Notification and Non-discrimination Statement

Rutgers Cooperative Extension is an equal opportunity program provider and employer. Contact your local Extension Office for information regarding special needs or accommodations. Contact the State Extension Director's Office if you have concerns related to discrimination, 848-932-3584.

Cooperative Extension of Cumberland County



1915-2017

NONPROFIT ORGANIZATION
U.S. POSTAGE PAID
VINELAND, NJ
PERMIT NO. 186

Cooperative Extension of Cumberland County
Extension Education Center
291 Morton Avenue
Millville, NJ 08332-9791

RUTGERS
New Jersey Agricultural
Experiment Station

Wednesday, August 15th, 2018

Rutgers Cook Campus Student Center – 59 Biel Rd. New Brunswick, NJ 08901

REGISTRATION IS NOW OPEN!

You don't want to miss your chance to be a part of the 2018 Summer Plant Symposium!

Recertification Track 1

Registration opens at 8:30am

Breakfast, Lunch, Living Wall Design Tour and Networking!

Members: \$125—Non-members: \$195

NJ: 1A-2, 02-2, 3A-6, 3B-4, 6B-6, 8C-2, CORE-1, PP2-4

PA: PC-5, 06-4, 07-1, 10-2, 18-7, 23-7

NY: 10-4, 3a-4, 25-4, 3b-1.50, 6a-1

ASLA: 5 Credits

APLD: 5

FERTILIZER: 4 Credits

CNLP: 1 Plants, 4 Environment and .5 Professional

NALP: 5

Design Track 2

Registration opens at 8:30am

Breakfast, Lunch, Living Wall Design Tour and Networking!

Members: \$125—Non-members: \$195

ASLA: 3

APLD: 3

CNLP: 2.5 Professional, 1.5 Design and 1.5 Plants

NALP: 5

****Early Bird Special****

Check It Out Before it's Too Late!

Members: \$99.00

Non-Members: \$155.00

[CLICK HERE TO REGISTER](#)

Great Speakers,
Lots of Credits and CEU'S.
Breakfast, Lunch, Living Wall Design Tour and Networking!

For information visit us at:

www.njnla.org

Track 1 Speakers:

John Patten, Paul Kurtz (NJ Dept of Ag), Larry Freedman (Site One), Sabrina Tirpak (Rutgers), David DeFrange (CNLP) & Rosalind Doremus (CNLP)

Living Wall Design Tour

4-5pm

ASLA: 1

APLD: 1

CNLP: .5 Design and .5 Plants

NALP: 1

Track 2 Speakers:

Bill Ingalsbe (Yardville Supply), Pat Donovan (Classic Landscaping), Darren Rafferty (NJ Ice B'Gone Magic), Joe Raboine (Belgard), Bruce Crawford (Rutgers), Erin Pfarr (Rutgers), David DeFrange (CNLP) & Rosalind Doremus (CNLP)

Full agenda and details at: www.njnla.org



2018 Registration Form

Company Name: _____

Contact Name: _____

Address: _____

City: _____ State: _____ Zip: _____

Email: _____ Website: _____

Phone: _____ Fax: _____

Names of those attending:

Early Bird Discount Ends 7/22 - Don't Miss The Savings!!

REGISTRATION OPTIONS:

Recertification & Design Tracks run concurrent. Registrations include Breakfast, Lunch, and Living Wall Design Tour, and Networking.

Early Bird Special Discounts – Register by 7/22

Recertification Track 1: _____ \$99 Member _____ \$155 Non-Member*

Design Track 2: _____ \$99 Member _____ \$155 Non-Member*

Refund Policy: You may receive a refund up to 14 days prior to the event. Less than 14 days - NJNLA has already incurred costs for your attendance and no refund will be issued.

*Please send me membership information for the following organizations (check all that apply):

NJ Nursery and Landscape Association NJ Turfgrass Association NJ Green Industry Council

Association of Professional Landscape Designers New Jersey Farm Bureau

Make check payable to NJNLA, 1200 Florence Columbus Rd., Office 112, Bordentown, NJ 08505

Completed forms may also be faxed: 609-291-1121

Credit Card Payment: Card #: _____

Name on Card: _____ Exp. Date: _____

Billing Address: _____

CV#: _____ Type: Amex MC Visa



Sponsorship Opportunities Available – call 609-291-7070 for details!!



Get Your Farm FSMA READY

with a
Confidential On-Farm
Readiness Review

In preparation for the launch of the Food Safety Modernization Act (FSMA) Produce Safety Rule in 2019, the New Jersey Department of Agriculture and Rutgers University food safety specialists are offering confidential On-Farm Readiness Reviews. The On-Farm Food Safety Team will work with growers to review their operation and make suggestions for possible modifications to comply with FSMA.

Why You Should Participate in a Review:

- To determine if your farm is exempt or partially-exempt from the FSMA rule
- To receive recommendations that will help you make a smoother transition into FSMA compliance
- To better prepare your farm for its official FSMA inspection, starting in 2019

Visits are **voluntary & confidential**. Findings are shared only with the farm owner/grower who requested the review. Visits will occur during the production season with the majority between March and October. So, schedule your visit now before slots fill up. **Contact the On-Farm Food Safety Team | 856-839-3377 | Charlotte.Muetter@ag.nj.gov**



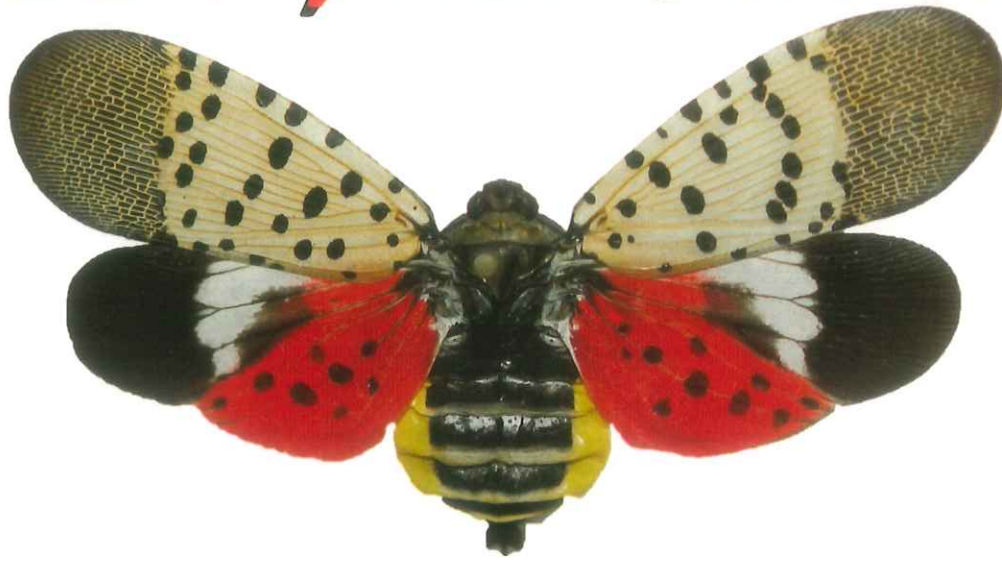
NEW JERSEY
DEPARTMENT OF AGRICULTURE
GET FSMA READY

RUTGERS

New Jersey Agricultural
Experiment Station

New Jersey Department of Agriculture | Douglas H. Fisher, Secretary of Agriculture

SEE IT, REPORT IT!



Spotted Lanternfly

What to do:

If you see egg masses, scrape them off, double bag and throw away.
You can also place the eggs into alcohol, bleach or hand sanitizer to kill them.

Collect a specimen:

Specimens of any life stage can be turned in to the New Jersey Department of Agriculture's lab for verification.

Take a picture:

With your GPS function turned on your smartphone or a camera with GPS, take a photograph of **ANY** life stage (including egg masses).

Submit picture to: SLF-plantindustry@ag.nj.gov

Report a site:

If you can't take a specimen or photograph, call and leave a message detailing the sighting location/address and your contact information.

NJ Spotted Lanternfly Hotline at 1-833-223-2840 (BADBUG0)

