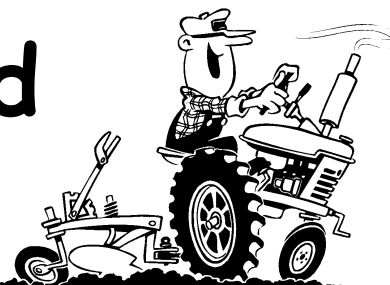


Cultivating Cumberland

July - 2019 VOL. 24, ISSUE 7

Inside this issue:



Jersey Fresh Marketing	1
Recall Plan for Food Safety	2
Mosquito Control	3-4
Pesticide Container Recycling	5
Board of Ag Scholarship Winners	6
Sign up for Environmental Quality Incentives Program	7
Farmer and Landowner Workshop: Working Lands for Wildlife	8
New Rutgers Fact Sheets	8
Calendar of Important Events	9-10
Verify Your Pesticide Exam Date	10
Regularly Scheduled Meeting	11
Website Information	12
Attachments	
• NJPMA 72nd Annual Clinic, Trade Show, & Clambake August 15, 2019	

Jersey Fresh Marketing

Tom Beaver, Director
New Jersey Department of Agriculture
Division of Marketing & Development

The Jersey Fresh marketing season is now in full swing. We are underway with a comprehensive outdoor advertising campaign and will be featuring different produce items on digital billboards throughout the summer. Right now, we are in market with blueberry-specific billboards, and our efforts are being complemented by additional billboards sponsored by the New Jersey Blueberry Council. Additionally, we went live with radio advertisements – including on streaming radio – this weekend and are using a new set of ads featuring Secretary Fisher.

More than five hundred store kits have been delivered to grocery retailers and produce distributors throughout the Tri-State area. As with every season, we will have staff on the road visiting with selected retail locations to assure that these materials are being used for the promotion of the *Jersey Fresh* brand.

For the 2019 growing season staff has signed up two hundred sixty-two Jersey Fresh Quality Grading Program licensees.

The month of June was highlighted by agricultural economic development and marketing work that should benefit New Jersey growers. Jersey Fresh program staff participated in the Allegiance Retail Services Show (principally Foodtown in New Jersey) where they promoted Jersey Fresh agricultural products to supermarket retailers. Staff promoted Jersey Fresh to the wholesale and retail produce industry via the distribution of Jersey Fresh point of sale materials to area retailers, wholesalers and farm marketers. The Jersey Fresh Availability & Forecast Report continues to be produced and disseminated via an email list each week. Staff participated in the grand opening the Mt. Holly community farmers market and in the annual meeting of the Keystone Development Center.

Note: The above information was extracted from Tom Beavers Summary Report to the State Board. For more information contact him.

Recall Plan for Food Safety

Wesley Kline

We just completed an online “New Jersey Growers Guide to Recall Plans.” The guide walks through the process of creating a recall plan and allows a grower to customize a plan for their farm. It explains about different types of recalls, what should be included in a grower plan and fillable forms for a grower to develop their own plan. It explains how to develop a traceability plan which is an integral part of the recall plan. There are templates for customer contact lists; farm recall team contacts; state recall team contacts; customer complaint form; health hazard evaluation and recall classifications and a model press release form the Food and Drug Administration. Go to onfarmfoodsafety.rutgers.edu and either download the document and write the plan or write the plan and save it as a pdf document. There is also a filled-out sample plan on the website in a separate file. A factsheet is under development which will cover all aspects of the recall plan.

Americans with Disabilities Act (ADA)

We have received several grower requests for materials on the ADA and service animals. This has become an issue as more and more people have “comfort animals.” While many types of animals can provide comfort and emotional support, only service animals are protected by the ADA, specifically within Title II and III. The ADA regulations define “service animal” as dogs, and less commonly miniature ponies, that are individually trained to do work or perform tasks for people with disabilities such as guiding a blind person, alerting people who are deaf, assisting a person in a wheelchair, alerting and protecting a person who is having a seizure, reminding a person with mental illness to take prescribed medications, calming a person with Post Traumatic Stress Disorder (PTSD) during an anxiety attack, or other duties. The work or task a service animal has been trained to perform must be directly related to the person’s disability. Some disabilities are obvious, others are not.

What questions can you legally ask?

When it is not obvious that an animal is a service animal only two questions may be asked to determine if the animal is a service animal.

- 1) Is the service animal required because of a disability?
- 2) What work or task has the service animal been trained to perform?

The service animal must have been trained to perform a specific task or work for a person with a disability in order to qualify for protection under the ADA regulations. Note that service animals do not always wear vests or harnesses, and there is no paperwork or identification card carried by anyone with a service animal. We have developed posters (22 X 28 inches and 8 X 12 inches) that can be displayed at a farmer’s market, roadside stand, etc. explaining the ADA rules in English and Spanish. There is also a 4 x 9-inch card that can be given to customers if they want more information. A factsheet is in the final stages of review which will provide detailed information on the differences between service animals and comfort animals and the type of policies a grower may want to implement in each case.

Mosquito Control

John J. Betz, Biologist for Cumberland County

How much do you really know about mosquitoes? You know they can be relentless once they decide to target a human as a source of a blood meal. You also know that a bite from them will leave a red, itchy welt on your skin that can be quite uncomfortable. But there's a lot more you should understand about these tiny insects, including the fact they can pose a significant health hazard to you, your family, and even your pets.

MOSQUITOES CAN BE DEADLY:

Many mosquito species carry and transmit diseases that can cause serious illness, and even death, in humans and animals, such as malaria, West Nile virus, dengue fever, chikungunya, and heartworm. According to the World Health Organization, mosquito-borne illnesses kill about one million people around the world each year, making these tiny pests the most deadly animals on the planet.

(MOST) MOSQUITOES DON'T LIKE THE SUNSHINE:

Many species of mosquitoes try to avoid the bright sunshine and extremely hot temperatures. They'll seek a cooler location during the daytime hours and bite during dusk and dawn. Unfortunately, there are a few species that love soaking up the sun and are considered daytime biters. Asian tiger mosquitoes, which are a vector for dengue and chikungunya, are daytime biters.

ANY SOURCE OF STANDING WATER CAN PROVIDE A MOSQUITO BREEDING GROUND:

Mosquitoes seek out sources of standing water for laying their eggs. Bird baths, rainwater tanks, flowerpot plates, clogged gutters, pool covers, and backyard ponds can easily become a mosquito breeding ground in your yard. Remember: mosquitoes can lay their eggs in an area as small as a bottle cap, so be thorough when mosquito-proofing your property!

MOSQUITOES PLAY FAVORITES:

If you've ever felt like mosquitoes bite you more than your friends, you may be right. Mosquitoes are highly attracted to the carbon dioxide and heat that all humans emit. People who have just finished exercising are more likely to be bitten due to higher body temperature and increased respiration. Beyond that, mosquitoes are attracted to a variety of different chemicals that humans release in their sweat and breath, including Octenol and lactic acid. Because everyone has different body chemistry, some people emit more of these mosquito-attractive chemicals than others, making them more susceptible to bites.

OTHER COMMON MOSQUITO ATTRACTANTS:

For some reason, mosquitoes seem to be drawn to smelly feet or the similar pungent aroma produced by Limburger cheese. Beer drinkers are also more likely to attract mosquitoes, as are people who are wearing the color blue.

MOSQUITO CONTROL OPTIONS:

According to the Centers for Disease Control and Prevention, there are only four chemicals known to repel mosquitoes: DEET, Picaridin, Oil of Lemon Eucalyptus and IR3535. Many commercially available mosquito repellent products contain DEET as the active ingredient. While a mosquito repellent can provide a certain amount of protection for a limited time, it won't get rid of the mosquitoes on your property. Keeping your property free of mosquito breeding areas can help reduce or eliminate mosquitoes.

WEST NILE VIRUS

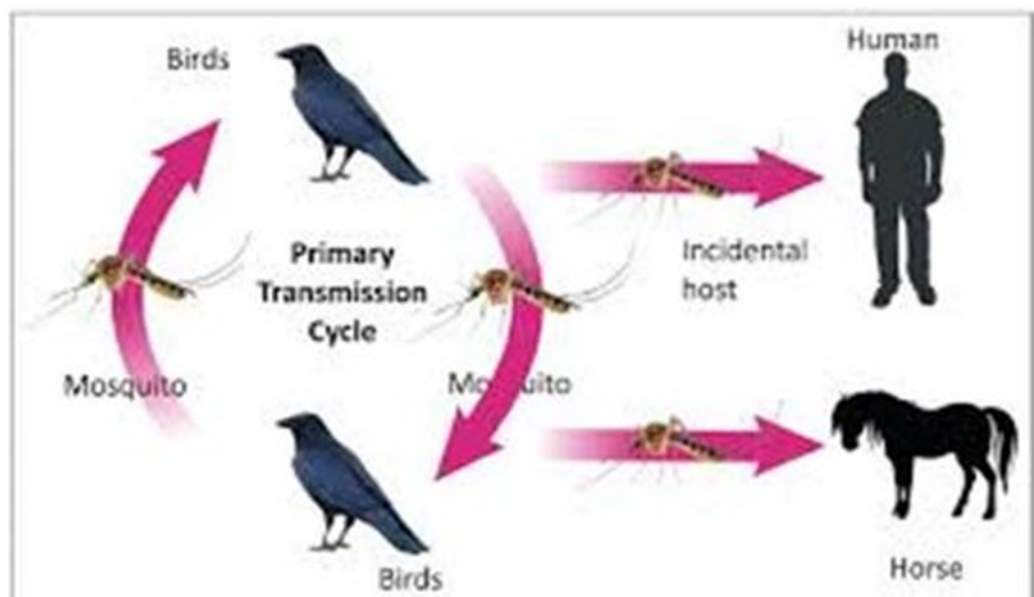
West Nile virus is found every year in Cumberland County. Please help us decrease its presence by dumping any standing water and eliminating mosquito breeding sites.

West Nile virus is most commonly spread to people by the bite of an infected mosquito.

Mosquitoes become infected when they feed on infected birds. Infected mosquitoes then spread West Nile virus to people and other animals by biting them.

In a very small number of cases, West Nile virus has been spread through:

- Exposure in a laboratory setting
- Blood transfusion and organ donation
- Mother to baby, during pregnancy, delivery, or breast feeding
- West Nile virus is not spread:
 - Through coughing, sneezing, or touching
 - By touching live animals
 - From handling live or dead infected birds. Avoid bare-handed contact when handling any dead animal. If you are disposing of a dead bird, use gloves or double plastic bags to place the carcass in a garbage can.
 - Through eating infected birds or animals. Always follow instructions for fully cooking meat from either birds or mammals.



Pesticide Container Recycling

Helena Chemical

66 Route 206 (North of the Route 30/206 Intersection)

Hammonton, New Jersey

Friday, July 5, 2019

9:00 A.M. to 12:00 P.M.

Future Dates at this site: August 2; September 6; October 4—NJDA Staffed

One core credit will be given to pesticide license holders who follow the few simple processing steps below and bring their license with them at time of collection when the NJDA are staffed at the collection site.

Helena Chemical will accept non-refillable, high-density polyethylene #2 (HDPE) containers that are no larger than 55 gallons and that have been triple rinsed. You must make sure containers are dry inside after they are rinsed out and either cut a 6-inch slit in the bottom or drill a quarter-inch hole in the bottom of the container to insure it will not hold liquids. Lids must be removed. Foil seal also must be removed. Containers that are 30 gallon size must be cut up into 4 pieces using a sawzall, chainsaw, circular saw, etc. 55 gallon containers must be cut up into 8 pieces accordingly.

Non-waxy cardboard also will be accepted during this collection program, since most of these products are sold in cardboard boxes. The cardboard must be flattened and must be tied. Collection of cardboard will take place every Friday from 1 to 3 p.m. from April through October.

Helena Chemical will not accept containers if they have held any type of petroleum oil product or antifreeze. Pesticide containers with any liquid or dried residue will not be accepted. No mini-bulk, saddle tanks or nurse tanks will be accepted, as they may be made of fiberglass.

For questions please contact Roberta Lang, NJDA, 609-292-2242.

Do not drop off containers unless it is during the scheduled collection times.



Extension Education Center
291 Morton Avenue
Millville, NJ 08332
856-451-2800

June 18, 2019

The Cumberland County Board of Agriculture would like to congratulate the accomplished students who were awarded the 2019 Board of Agriculture Scholarship. The two students were each awarded \$2,000.

Karleen Wilford is a senior at Cumberland Regional High School and will be attending Cumberland County College in the fall. She will be studying agriculture with a goal of becoming a veterinarian. She has a long history of 4-H and FFA involvement and this year she will serve as the reporter for the state FFA office.

Virgen Silva Mendez is a senior at Bridgeton High School and has not finalized her college choice yet. She has been accepted to Penn State University, Rider University, Rowan University, and Stockton University. She will major in Environmental Science. She has served the community with multiple volunteer organizations including Junior Reserve Officers' Training Corps, (JROTC), National Honor Society, and Bridgeton Next Generation Leaders.

We are honored to be able to provide these students with the opportunity to continue their education in agriculture and look forward to them becoming leaders in the state.

The Cumberland County Board of Agriculture is a nonprofit group looking to support and promote agriculture in the number one producing county in the state of New Jersey... Cumberland County.

New Earlier Sign up for Environmental Quality Incentives Program (EQIP)

Apply by August 30, 2019 for Assistance for Conservation Activities on Agricultural and Forest Land

SOMERSET, June 11, 2019 – New Jersey’s State Conservationist Carrie Lindig with USDA’s Natural Resources Conservation Service (NRCS) is encouraging agricultural producers and forest land managers to contact their local NRCS office to plan conservation activities for their operations for next year. Applications for assistance through the Environmental Quality Incentives Program (EQIP), EQIP Conservation Activity Plans and EQIP Initiatives submitted to local NRCS offices by August 30, 2019, will be considered for Fiscal Year 2020 funding. “In past years, we accepted applications through October. This year, we are closing the application period in August to get contracts signed and planning underway so there is ample time for implementation in the summer of 2020.”

NRCS soil conservationists are available to help New Jersey private land managers assess the natural resources on their property and suggest conservation practices that could be planned and implemented with NRCS assistance. The Environmental Quality Incentives Program provides financial assistance for a variety of conservation activities. Initiatives in New Jersey include the Golden Winged Warbler Initiative in north Jersey and the National Water Quality Initiative in south Jersey. EQIP can help producers address issues such as animal waste management, efficient irrigation, erosion control, improving soil health, wildlife habitat improvement, and more by incorporating conservation into their farming operations.

Lindig said, “Last year NRCS provided over \$5.4 million in EQIP financial assistance to New Jersey producers. As we anticipate similar funding allocations for FY2020, we are hoping that more eligible New Jersey landowners and managers will take advantage of the opportunities available through NRCS’s voluntary conservation programs.”

NRCS provides financial and technical assistance to help agricultural producers address resource concerns through conservation programs authorized by the Farm Bill. NRCS accepts applications for conservation programs year-round. Applications are processed when funding becomes available. Interested producers should visit their local NRCS service center and the NJ NRCS website (www.nj.nrcs.usda.gov) for more information.

USDA is an equal opportunity provider, employer and lender. To file a complaint of discrimination, write to USDA, Assistant Secretary for Civil Rights, Office of the Assistant Secretary for Civil Rights, 1400 Independence Avenue, S.W., Stop 9410, Washington, DC 20250-9410, or call toll-free at (866) 632-9992 (English) or (800) 877-8339 (TDD) or (866) 377-8642 (English Federal-relay) or (800) 845-6136 (Spanish Federal-relay).

Farmer and Landowner Workshop: Working Lands for Wildlife

Tuesday, July 16th 6:00-9:00 pm, Cedar Rose Vineyard, 431 Kenyon Avenue, Millville NJ

Private landowners and farmers interested in creating and conserving wildlife habitat throughout Southern New Jersey are invited to attend.

Farm Bill programs provide technical and financial assistance to landowners to conserve working landscapes for the benefit of at-risk species including American black duck, Northern bobwhite quail, bog turtles, and many others. Partners of the Natural Resources Conservation Service (NRCS) will provide updates on imperiled species and describe how habitat enhancement on private lands supports them.

Representatives from New Jersey Audubon, NRCS, Quail Forever, New Jersey Division of Fish and Wildlife, and US Fish and Wildlife Service will present programs available to help landowners meet their goals for wildlife conservation. Many programs provide producers with incentive payments for the protection of pollinators, songbirds and non-game species on working lands. Applications will be available on site.

Enjoy an evening mingling with like-minded individuals and professionals in the field. Light fare will be provided, and a wine cash bar will be available throughout the evening on the lawn of Cedar Rose Vineyards. We hope to see you there!

For more information or to reserve a spot, please contact Brittany Dobrzynski at brittany.dobrzynski@njudubon.org or 609-400-3826.

New Rutgers Fact Sheets

The following new fact sheets are now available from Rutgers:

FS608	Fire Prevention and Safety Measures around the Farm Margentino M., Malinowski K., Malone S., Williams C.
Visit	https://njaes.rutgers.edu/FS608/
FS607	Horse Trailer Maintenance and Trailering Safety Margentino M., Malinowski K., Malone S., Williams C.
Visit	https://njaes.rutgers.edu/FS607/
FS606	Safety Recommendations for the Stable, Barn Yard, and Horse/Livestock Structures Margentino M., Malinowski K., Malone S., Williams C.
Visit	https://njaes.rutgers.edu/FS606/
FS605	Accident-Proofing Farms and Stables Margentino, M., Malinowski, K., and Malone, S.
Visit	https://njaes.rutgers.edu/FS605/

Calendar of Important Events

✓Indicates a newly added event since the last calendar

July

July 16

Basic Pesticide Training for CORE Certification; Rutgers Extension Office of Burlington County, 2 Academy Drive, Westampton, NJ 08060; 9:00 A.M.—1:00 P.M.; \$99; Required training for taking the NJDEP CORE Exam and for an operators license; Those with current licenses receive 8 Core recertification credits upon completion of this class; Register online at www.njpma.org

July 23-24

✓ **NAFDMA Agritourism Farm Tour;** Learn from operators and innovators in the agritourism industry. Enjoy two jam packed tour days featuring 13 tour stops. Explore a variety of business models with focus areas in the following categories: Production, PYO, Agritainment, Retail. Each stop will be between 1-2 hours and will provide insight on what to consider for your next season! Hyatt Place Minneapolis Airport-South 7800 International Dr. Bloomington, MN
www.Farnersinspired.com

July 25

✓ **Flower Trial Field Day;** Southeast Agricultural Research & Extension Center (SEAREC) 1446 Auction Road, Manheim, PA 17545 The Flower Trial Field Day in Manheim is the industry's opportunity to see firsthand the newest annual flowers that will be offered to garden centers and landscape clients. We offer guided tours and a series of educational seminars from industry experts. Pesticide credits will be available. For more information contact: Sinclair Adam 717-270-4391, saa19@psu.edu

July 29-Aug 2

✓ **Perennial Play Symposium;** Chicago, IL. Contact: Perennial Plant Assoc. Exec. Dir., Shawn Swearingen, 202.591.2470, 529 14th Street, NW, Suite 750, Washington, D.C. e-mail, sswearingen@kellencompant.com www.perennialplant.org

August

August 15

✓ **NJPMA Clinic, Trade Show & Clambake;** 72nd annual event. See attachment for more details

August 19-23

Introduction to Food Science; New Jersey Institute for Food, Nutrition and Health, Room 101 61 Dudley Rd, New Brunswick NJ 08901; 9:00 A.M.—4:00 P.M.; 5 days for \$1695; Breakfast and lunch included; Register online at <https://ce-catalog.rutgers.edu/coursedisplay.cfm?schID=74616>

October

October 17-19

✓ **PMA Fresh Summit Convention and Expo;** 70th annual PMA Fresh Summit Convention and Expo in Anaheim, California; Speaker line up includes Robert Herjavec, from Shark Tank, Cathy Burns, CEO of Produce Marketing Association, and Queen Latifah, Musician, Actress, Author Entrepreneur;

November

November 13-14

Sensory Evaluation; Cook Student Center, 59 Biel Road, New Brunswick, NJ 08901; 8:30 A.M. – 4:30 P.M.; \$995 before October 30 or \$1025 after; Breakfast and lunch included; Build your sensory evaluation skills and develop a greater understanding of the science behind food aroma, taste, color, and texture in this 2-day class; For more information or to register online go to <http://www.cpe.rutgers.edu/courses/current/lf0606ca.html>

January

January 8-10, 2020

✓ **MANTS 2020;** (Mid-Atlantic Nursery Trade Show). Baltimore Convention Center, One West Pratt Street, Baltimore, MD. Contact: MANTS, PO Box 818, Brooklandville, MD 21022; 800.431.0066; Fax, 410.296.8288; email, info@mants.com; www.mants.com

January 13, 2020

✓ **2020 Becker Forum;** Marriott Syracuse Downtown

How to Verify Your Exam Date for Pesticide Testing:

1. Go to www.nj.gov/dep/
2. Click on “Pesticides” on the left side of the screen
3. Scroll down and click on “Pesticides” in the About Us section
4. Click on “Verify the Date of Your Exam”
5. Scroll down to “Pesticide Certification Exam Sign-Up Info” and look for which one your last name falls under. [A through I, J through Q, or R through Z]
6. Select your last name in the drop down box
7. Enter your birthday in this format MM/DD/YYYY
8. Enter the last 4 digits of your social security number
9. Hit Submit
10. The report will give you two options to view it, PDF or Excel. Click on PDF or Excel
11. It will then download onto your computer
12. Click on it at the bottom of your screen to open it

More options on this website: make online payments, find information about licensing, sign up for exams, find the exam schedule, check credits, check course history, find training courses or recertification courses, and many others. If you need help navigating this website give Brandi a call at the Rutgers Extension Office of Cumberland County, 856-451-2800, ext 1.

REGULARLY SCHEDULED MEETINGS

✓ Indicates meeting will be held at RCE of Cumberland County

<p>✓</p> <p>Pesticide Certification Exam Schedule—Cumberland County 291 Morton Avenue Millville, NJ 08332 (Between Rosenhayn & Carmel)</p> <p style="text-align: center;"><u>2019</u></p> <p>Sept 18 Oct 16</p> <p>To Register call 609-984-6614 For directions call 856-451-2800</p> <p>*****</p>	<p>Cumberland County Agriculture Development Board County Administration Bldg. Freeholder Room 164 W. Broad Street Bridgeton, NJ 08332</p> <p style="text-align: center;"><u>2019</u></p> <p>July 9 Aug 13 Sept 10 Oct 8 Nov 12 Dec 10</p> <p>Reg. Meetings start at 7 p.m. Information call 856-453-2211</p> <p>*****</p>	<p>✓</p> <p>Cumberland County Board Of Agriculture 291 Morton Avenue Millville, NJ 08332 (Between Rosenhayn & Carmel) 7 pm meetings</p> <p style="text-align: center;"><u>2019</u></p> <p>Sept 19 Oct 17 Nov 21 Dec 19</p> <p>For info call Lew DePietro, President at 856-981-9843</p> <p>*****</p>
---	--	--

**Cumberland County Improvement Authority (CCIA)
Pesticide Container Recycling
9:00 a.m. to 12 Noon**

Cumberland County Solid Waste Complex
169 Jesse's Bridge Rd. (located off Route 55 Exit 29)
Deerfield Township, New Jersey

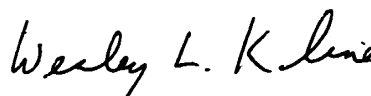
Questions? Call Division of Ag & Natural Resources, NJ Dept. of Ag 609-292-2242

Program in Cumberland County suspended until further notice.

Sincerely,



Salvatore S. Mangiafico, Ph.D.
County Agent II/Associate Professor
Environmental & Resource Management
Internet: Mangiafico@njaes.rutgers.edu



Wesley L. Kline, Ph.D.
County Agent II/Associate Professor
Vegetable & Herb Production
Internet: wkline@njaes.rutgers.edu

Pesticide User Responsibility: Use pesticides safely and follow instructions on labels. The user is responsible for the proper use of pesticides, residues on crops, storage and disposal, as well as damages caused by drift.

Use of Trade Names: Trade names are used in this publication with the understanding that no discrimination is intended and no endorsement is implied. In some instances the compound may be sold un-

Have you visited the Cumberland County website for the Present and/or past issues of "Cultivating Cumberland"? It's a great resource for information and dates.....
<http://Cumberland.njaes.rutgers.edu/>

Public Notification and Non-discrimination Statement

Rutgers Cooperative Extension is an equal opportunity program provider and employer. Contact your local Extension Office for information regarding special needs or accommodations. Contact the State Extension Director's Office if you have concerns related to discrimination, 848-932-3584.

Cooperative Extension of Cumberland County



1915-2019

NONPROFIT ORGANIZATION
U.S. POSTAGE PAID
VINELAND, NJ
PERMIT NO. 186

Cooperative Extension of Cumberland County
Extension Education Center
291 Morton Avenue
Millville, NJ 08332-9791

RUTGERS
New Jersey Agricultural
Experiment Station