

Cultivating Cumberland

November - 2024

Vol. 29, Issue 11

<u>Table of Contents</u>	
Food Safety Trainings for Fall and Winter	1
Financial Assistance for Food Safety Certification and Training	2-3
NJ Land Link is now up to date - available to help farmers and landowners connect!	3
Vegetable IPM Program – Corn Earworm Monitoring	4

Attachments

- Rutgers Environmental Steward
- The Food Safety Certification for Specialty Crops (FSCSC)
- Mid-Atlantic Farmers Market Conference
- South Jersey Nursery Updates

Cooperating Agencies: Rutgers, The State University of New Jersey, U.S. Department of Agriculture, and Boards of County Commissioners, Rutgers Cooperative Extension, a unit of the Rutgers New Jersey Agricultural Experiment Station, is an equal opportunity provider and employer.

Food Safety Trainings for Fall and Winter

This is the time of the year to update your food safety trainings. There are several trainings planned through February that are in person or remote.

December

The registration deadline is fast approaching for our December 5 and 6, 2024 Remote Food Safety Modernization Act: Produce Safety Rule Training. This training fulfills the requirements of the Food and Drug Administration that at least one person from each farm needs to receive a standardized curriculum recognized by the FDA. This class runs from 9:00-1:00 EST and both days are required to receive the certificate. The deadline to register is Sunday, November 17, 2024, exceptions to this deadline cannot be made due to the nature of the remote program.

January

Preharvest Water Webinar: Wednesday, January 8, 2025, from 12:00-1:00 EST. During this one-hour lunchtime webinar, learn the ins and outs of the Food Safety Modernization Act: Produce Safety Rule (FSMA:PSR), Pre-Harvest Water (irrigation, frost protection, spray water, dust control, etc.) changes. The final rule establishes requirements for systems-based pre-harvest agricultural water assessments for hazard identification and risk management decision-making. Covered farms - those that are subject to the requirements in the FSMA:PSR - that use pre-harvest agricultural water for covered produce are required to conduct agricultural water assessments and an inspection of the system annually, and whenever a significant change occurs that increases the likelihood that a known or reasonably foreseeable hazard will be introduced into or onto produce or food contact surfaces. As part of both their pre-harvest agricultural water assessments and inspection, farms are required to evaluate certain factors that could impact produce safety because of pre-harvest agricultural water use.

Food Safety Training for Blueberry Growers: Wednesday, January 29, 2025, from 9:00 –12:00 EST. at Marucci Center for Blueberry and Cranberry Research and Extension, 125a Lake Oswego, Chatsworth, NJ. The On-Farm Food Safety team will update blueberry growers on any changes to the Produce Safety Rule and the Traceability Rule which takes effect in 2026.

February

Food Safety Modernization Act: Produce Safety Rule in Person Training: February 6, 2025, from 9:00-4:00 EST. New Jersey Vegetable Growers Convention at Harrah's Waterfront, 777 Harrah's Blvd., Atlantic City, NJ. This is the same training that is being offered remotely in December but requires one day.

Note:

Financial Assistance for Food Safety Certification and Training is available from the USDA Farm Service Agency. This is the chance for eligible fresh fruit and vegetable growers to recover some of their expenses for implementing food safety practices on the farm. For more information on this program please see following pages and attached fact sheet.

For more information and to sign up for one of the classes go to: Our Trainings - Rutgers On-Farm Food Safety (<https://onfarmfoodsafety.rutgers.edu/trainings/>)

Source: On-Farm Food Safety Team (Meredith Melendez, Jenn Matthews, Kate Brown and Wes Kline)

Financial Assistance for Food Safety Certification and Training

This is the chance for eligible fresh fruit and vegetable growers to recover some of their expenses for implementing food safety practices on their farms.

For 2024:

- Applications are due between July 1, 2024 and January 31, 2025
- Eligible expenses must be between June 26, 2024 and December 31, 2024

For 2025:

- Application is due between January 1, 2025 and January 1, 2026
- Eligible expenses must be between January 1, 2025 and December 31, 2025

Eligible specialty crop operations can apply for Food Safety Certification for Specialty Crops (FSCSC) by working directly with the Farm Service Agency offices at your local FSA office for details. Applications will be accepted via mail, fax, hand delivery, or electronic means.

How the Food Safety Certification for Specialty Crops Program Works

The FSCSC program provides financial assistance for specialty crop operations that incur eligible on-farm food safety program expenses related to obtaining or renewing a food safety certification in years 2024 and 2025. This program helps offset costs to comply with regulatory requirements and market-driven food safety certification requirements. FSCSC will cover a percentage of the specialty crop operation's cost of obtaining or renewing their certification, as well as a percentage of their related expenses.

Program Eligibility

Eligibility requirements for FSCSC applicants are outlined below. We recommend you review these requirements before initiating your FSCSC application.

To be eligible for FSCSC, an applicant must have obtained or renewed:

- 2024 food safety certification issued between June 26, 2024, and December 31, 2024
- 2025 food safety certification issued during calendar year 2025.
- Be a specialty crop operation (growing fresh fruits and vegetables); and meet the definition of a small business or medium size business.
- A small (farm) business means an applicant that had an average annual monetary value of specialty crops the applicant sold during the 3-year period preceding the program year of not more than \$500,000.
- A medium (farm) business means an applicant that had an average annual monetary value of specialty crops the applicant sold during the 3-year period preceding the program year of at least \$500,001 but no more than \$1,000,000.

Category of Eligible Expenses	Payment Amount of Eligible Costs
Developing a Food Safety Plan for First Time Certification	75% (no maximum)
Maintaining or Updating a Food Safety Plan	75% up to \$675
Food Safety Certification	75% up to \$2,000
Certification Upload Fees	75% up to \$375
Microbiological Testing of Produce	75% up to 5 tests
Microbiological Testing of Soil Amendments	75% up to 5 tests
Microbiological Testing of Water	75% up to 5 tests
Training Expenses	100% up to \$500

Continued on page 3

Financial Assistance...Continued from page 2

FSCSC payments are calculated separately for each category of eligible costs based on the percentages and maximum payment amounts. The FSCSC application and associated forms are available online at farmers.gov/food-safety.

You are encouraged to contact the Farm Service Agency office about FSCSC, program eligibility, or the application process. You may also call 877-508-8364 to speak directly with a USDA employee ready to provide one-on-one assistance.

For our current trainings please go to: Our Trainings – Rutgers On-Farm Food Safety (<https://onfarmfoodsafety.rutgers.edu/trainings/>)

Prepared by the Rutgers On-Farm Food Safety Team

NJ Land Link is now up to date - available to help farmers and landowners connect!

As of October 1st, all postings on NJ Land Link, www.njlandlink.org, have been verified as active and all outdated postings have been removed. The linking site was developed by the SADC and NOFA-NJ to help farmers and landowners connect with one another directly on land access and farming opportunities throughout NJ.

Landowners post listings describing their available farmland while farmers create profiles to describe their farmland needs and goals. If you have farmland and are looking for a farmer, or if you are a farmer looking for farmland, check out NJ Land Link!

Register for free to see listings' contact information and to create your own posting. Check out www.njlandlink.org for more details or reach out to the SADC Next Generation Farmer Coordinators Brendon Pearsall (Brendon.pearsall@ag.nj.gov) and Jessica Brandeisky (Jessica.brandeisky@ag.nj.gov) for information and assistance.

The screenshot shows the NJ Land Link website interface. At the top, the logo reads "nj land link. helping farmers set roots in the garden state." Below the logo is a navigation bar with buttons for "FIND FARMLAND", "FIND A FARMER", "RESOURCES", "ABOUT", "CONTACT", "LOG IN", and "REGISTER NOW". A secondary navigation bar includes "MAP VIEW", "LIST VIEW", "SELECT COUNTY", "FILTER RESULTS", and "RESET MAP". The main content area features a map of New Jersey with numerous green location pins indicating land listings. To the right of the map is a "Most Recent Listings" sidebar with the following entries:

Location	Acres	Opportunity	Date Added
Warren	37.00	For Lease	10/22/2024
Warren	38.50	For Lease	10/22/2024
Warren	107.00	For Lease	10/22/2024
Warren	113.00	For Lease	10/22/2024
Warren	86.00	For Lease	10/22/2024

At the bottom left of the map area, it says "Farmland Listing Results: 55".

Vegetable IPM Program – Corn Earworm Monitoring

Plant and Pest Advisory - Kris Holmstrom and Amanda Quadrel - October 24, 2024

Corn Earworm Monitoring – Moving Forward

It is likely that blacklight trapping will not be continued in the Rutgers Vegetable IPM Program beginning in 2025, due to the unavailability of the specific bulb that has been the standard for blacklight traps for decades. Under these circumstances, the IPM Program will rely on pheromone trapping to determine levels of important crop pests such as the corn earworm (CEW).

The 30" Hartstack trap (see photo), also called the Texas pheromone trap (TPT), which is used in the Rutgers IPM Program, as well as many insect monitoring programs in other states, is the best tool for determining spray intervals on silking sweet corn to limit CEW injury. A number of New Jersey sweet corn growers already have one or more TPTs on the farm, but we encourage all growers of this crop to obtain at least one.

Deploying Traps

The TPT is mounted on ½" rebar set at a height of approximately 4'. The trap is baited with one Hercon Luretape Corn Earworm Lure, available from Great Lakes IPM®. An additional lure is added every two weeks, and the trap should always be deployed directly adjacent to sweet corn expressing fresh silks. This means that the trap should be moved frequently during the season.

Building or Buying Traps

The TPT is relatively simple to manufacture, and the University of Kentucky has posted the plans and parts list for making these traps in the growers' shops. The UK site for trap design is: <https://entomology.ca.uky.edu/ef010>

For those who wish to purchase this trap rather than making their own, TPTs are available from Mike "O" Olsowski in Geneva, NY. Mr. Olsowski has made a number of TPT tops for the Rutgers IPM Program and is willing to make and ship these traps to New Jersey growers. Contact information for Mike "O" Olsowski:

Mike "O" Olsowski
3510 Sutton Rd.
Geneva, NY 14456
Phone: 315-651-5929



Recording Catches

Current silk spray intervals based on corn earworm catches in the 30" Hartstack trap were developed by the Univ. of Delaware some time ago, and are represented on the chart at Pheromone Trap Template 2025.xlsx, (<https://plant-pest-advisory.rutgers.edu/wp-content/uploads/2024/10/Pheromone-Trap-Template-2025.pdf>) which may be printed and posted in a convenient site on the farm so that growers can record the catch and determine a silk spray schedule. This trap record also includes spaces for other insects for which commercial pheromones are available, including beet armyworm and fall armyworm. Contact information for Rutgers Vegetable IPM Program staff (currently, Amanda Quadrel) is also included on the chart.

Calendar of Events

- Indicates a newly added event
- * Indicates Pesticide Credits Offered

- **November 14, 2024**

Bobwhite in Ag Spaces - Dr. Mark McConnell, Mississippi State- WLFW East Region Webinar Series
https://us06web.zoom.us/webinar/register/WN_8WSQ22-oQQSeo8AUQskhVA?utm_medium=email&utm_source=govdelivery#/

- **December 3-4, 2024**

38th Annual Southeast Vegetable & Fruit EXPO, Embassy Suites by Hilton Myrtle Beach Oceanfront Resort 9800 Queensway Blvd., Myrtle Beach, SC -(www.ncvga.com) email (cathy@seasag.com)

- **December 5 and 6, 2024**

Remote Food Safety Modernization Act: Produce Safety Rule Training.
Register here: <https://onfarmfoodsafety.rutgers.edu/trainings/>

- **December 10-12, 2024**

The Great Lakes EXPO 2024 Connect Innovate Grow, Great Lakes Fruit, Vegetable and Farm Market EXPO- www.glexpo.com

- **December 12, 2024**

Bobwhite in Pasture Systems - Tanner Patton, Quail Forever- WLFW East Region Webinar Series
https://us06web.zoom.us/webinar/register/WN_8WSQ22-oQQSeo8AUQskhVA?utm_medium=email&utm_source=govdelivery#/

- **January 9, 2025**

Bobwhite in Pine Forested Systems - Brad Kubecka, Tall Timbers- WLFW East Region Webinar Series
https://us06web.zoom.us/webinar/register/WN_8WSQ22-oQQSeo8AUQskhVA?utm_medium=email&utm_source=govdelivery#/

- **Feb. 4-7, 2025**

The American Cider Association (ACA) has announced that the 15th annual CiderCon conference and trade show Early registration until Dec. 13, with prices increasing afterward. Public tickets are also available Visit the CiderCon (<https://ciderassociation.org/cidercon2025/>) website for more details.

- **February 13, 2025**

Bobwhite in Hardwood Forested Systems - John Gruchy, MDWFP- WLFW East Region Webinar Series
https://us06web.zoom.us/webinar/register/WN_8WSQ22-oQQSeo8AUQskhVA?utm_medium=email&utm_source=govdelivery#/

- **February 28, 2025- In-Person & Online**

CEA Leafy Crops Event- Discover cutting-edge research, technologies and innovations
Registration Opening Soon- <https://ohceac.osu.edu/cea-leafy-crops-event>

Fact Sheets:

FS656: Are You 'Stressing Out' Your Horse? (<https://njaes.rutgers.edu/fs656/>)- Williams, C.

FS886: Ostrich, Emu, and Rhea Production (<https://njaes.rutgers.edu/FS886/>)- Stahl, T. and Westendorf, M.

FS1065: Antioxidants and Your Horse (<https://njaes.rutgers.edu/fs1065/>)- Williams, C.

FS1081: To Blanket or Not to Blanket? (<https://njaes.rutgers.edu/fs1081/>)- Williams, C. and Liburt, N.

FS1142: Winter Care for Horses (<https://njaes.rutgers.edu/fs1142/>)- Williams, C. and Ralston, S.

FS1143: Winter Feeding for Horses (<https://njaes.rutgers.edu/fs1143/>)- Williams, C. and Ralston, S.

Classes begin
January 21,
2025!

MAKE A DIFFERENCE IN YOUR COMMUNITY

Become a RUTGERS ENVIRONMENTAL STEWARD



A Rutgers Environmental Steward is a volunteer that is trained in the important environmental issues affecting New Jersey and works to help solve local environmental problems.

- Weekly classes taught by leading researchers from Rutgers, government, and the nonprofit sector. Tuesdays 5:30-8 PM. 11 online and 5 in-person sessions.
- Fieldtrips to environmentally significant sites are included.
- Topics include climate change, solid waste, recycling, soil health, alternative energy, water quality, habitat conservation, pollinator protection, and environmental policy.
- Complete a 60-hour project in your community to become certified.
- Program fee - \$325 Early Bird (Before 12/31) \$300

Anyone can become an Environmental Steward!

No previous experience needed. You simply need a passion for the environment, a desire to learn, and a willingness to volunteer to create positive change in your community.

To register or learn more visit: envirostewards.rutgers.edu



RUTGERS UNIVERSITY
Environmental Stewards
New Jersey Agricultural Experiment Station





STATE OF NEW JERSEY
DEPARTMENT OF AGRICULTURE

JOIN US!

**THE ORGANIC AND REGENERATIVE FARMING BOARD
OF NEW JERSEY**

FIRST QUARTERLY MEETING

**THURSDAY, NOV. 14TH
4-6 PM**

**200 RIVERVIEW PLAZA 1ST FLOOR,
TRENTON, NJ 08611**

OR

VIRTUAL VIA MICROSOFT TEAMS

**MEET THE BOARD,
TALK ORGANIC AG.,
SNACKS**



SCAN ME



MID-ATLANTIC FARMERS MARKET CONFERENCE

Passport to Success: Leveling Up

November 13-15, 2024

Richmond, VA

Brought to you by

Virginia State University Cooperative Extension & Virginia Farmers Market Association



Greater Happens Here
College of Agriculture



Join us for a dynamic 3-day event bringing together farmers, market managers, policymakers, and community partners. Engage in targeted workshops, training opportunities, and networking events tailored for New Market Managers, Experienced Market Managers, and Vendors. Topics include (to view the full list, visit the registration link below):

- Same Day SNAP Authorization for Markets!
- From Stalls to Stability: The Truth Behind the Grind
- Q and A session with Experienced Market Managers
- The Big Bite – Vendor Marketing Essentials
- From Field to Fan: Turn Your Passion into Powerful Marketing Tools
- Avoiding Common Legal Pitfalls for Farmers Markets
- Standard Operating Procedures for Success
- Values Based Leadership and Conflict Resolution
- The Possibility of Plastic Free Farmers Markets
- Navigating the Regulatory Requirements of Selling
- Using Vendor Visits as a Tool for Market Managers
- How SNAP-Ed supports Farmers and Farmers Markets
- Small Business Accounting Basics
- Overview of Farmers Market Food Access Programs
- Farmers & Markets Actually Improve Low-Income Food Security
- Bridging the Language Gap: Ensuring Equitable Access to SNAP Matching Programs
- Modernization of Farm Market Fresh and Farmers Market Nutrition Programs
- First Aid, CPR, & AED Certification
- ServSafe Food Protection Manager Certification

Location:

Doubletree by Hilton
1021 Koger Center Drive,
Richmond, VA 23235

Registration:

VAFMA Member – \$285
Non-member – \$345

Register Today!

Learn More & Register https://www.flipcause.com/secure/cause_pdetails/MjA3OTg4

Sponsors



FARMERS MARKET UNIVERSITY



Funding for this publication was made possible by the U.S. Department of Agriculture's (USDA) Agricultural Marketing Service through grant 21FMPPVA1084. Its contents are solely the responsibility of the authors and do not necessarily represent the official views of the USDA.

FOOD SAFETY CERTIFICATION FOR SPECIALTY CROPS

Program Years 2024 and 2025



Overview

The Food Safety Certification for Specialty Crops (FSCSC) Program provides assistance to specialty crop operations that incurred eligible on-farm food safety program expenses in 2024 and 2025.

These operations incur significant costs to comply with regulatory requirements and market-driven food safety certification requirements each year with little opportunity to recover increased costs.

Who is Eligible?

To be eligible for FSCSC applicants must meet the following:

- Be a specialty crop operation;
- Have obtained or renewed a:
 - 2024 food safety certification that was issued between June 26, 2024 and December 31, 2024
 - 2025 food safety certification issued during calendar year 2025
 - Have paid eligible expenses;
- Meet the definition of a small business or medium-sized business; and
- Be located in the United States, District of Columbia, the Commonwealth of Puerto Rico, Guam, American Samoa, the U.S. Virgin Islands, or the Commonwealth of the Northern Mariana Islands.

PROGRAM YEAR	ELIGIBLE CERTIFICATION DATE	APPLICATION PERIOD
2024	June 26, 2024 - December 31, 2024	July 1, 2024 - January 31, 2025
2025	January 1, 2025 - December 31, 2025	January 1, 2025 - January 31, 2026

What Expenses are Eligible?

Specialty crop operations may receive reimbursement for developing an initial food safety plan, maintaining or updating an existing food safety plan, food safety certification, certification upload fees, microbiological testing, and training.

Specialty crop operations who obtain their food safety certification through a group model under a food safety management system are eligible for their share of eligible expenses paid by the group, in addition to any eligible expense incurred individually.

What Expenses are not Eligible?

Ineligible expenses include infrastructure improvements, equipment, supplies, salaries and benefits of employees, and fees or penalties for late payment.

What are the Maximum Payment Rates?

CATEGORY OF ELIGIBLE EXPENSES	PAYMENT AMOUNT OF ELIGIBLE COSTS
Development of a food safety plan for first-time certification	75 percent (no maximum)
Maintaining or updating a food safety plan	75 percent, up to a maximum of \$675
Food safety certification	75 percent, up to a maximum of \$2,000
Certification upload fees	75 percent, up to a maximum of \$375
Microbiological testing – products	75 percent, up to 5 tests
Microbiological testing – soil amendments	75 percent, up to 5 tests
Microbiological testing – water	75 percent, up to 5 tests
Training	100 percent, up to a maximum of \$500

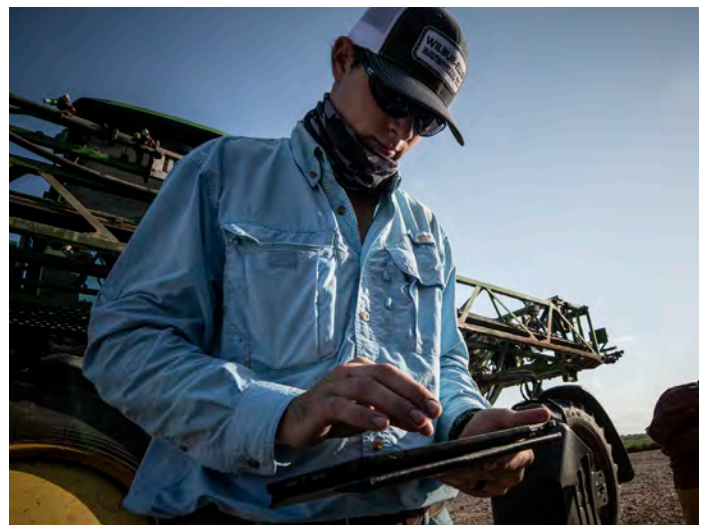
How to Apply

Eligible specialty crop operations may apply for FSCSC by completing the FSA-888-1, Food Safety Certification for Specialty Crops application, and submitting it to any FSA county office. A complete application includes all the following, which may be downloaded at farmers.gov/food-safety:

- FSA-888-1, Food Safety Certification for Specialty Crops (FSCSC) Application
- AD-2047, Customer Data Worksheet, for new customers or existing customers who need to update their customer profile
- SF-3881, ACH Vendor/Miscellaneous Payment Enrollment Form
- If requested by FSA, the applicant must provide supporting documentation to substantiate the expenses. Examples of supporting documentation include paid invoices, purchase receipts, test results, food safety plans, training documentation, and other records determined acceptable by COC.

Where to Apply

You may apply at one of over 2,100 FSA offices nationwide. Applications may also be submitted by mail, fax, email, hand delivery or by electronic means. Please contact the FSA county office prior to sending applications electronically for instructions and assistance. The FSCSC application and associated forms are available online at farmers.gov/food-safety.



Who to Call for Help

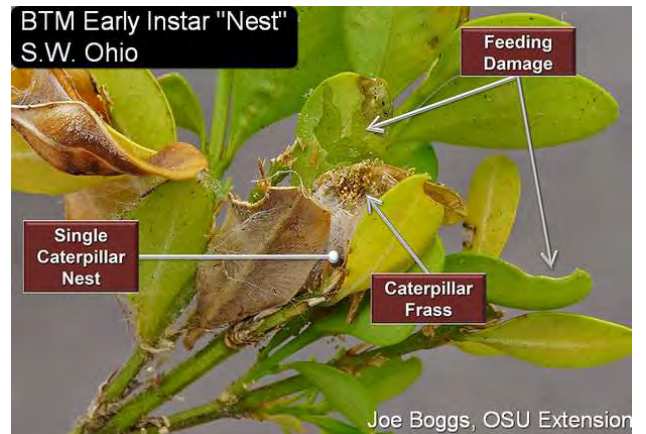
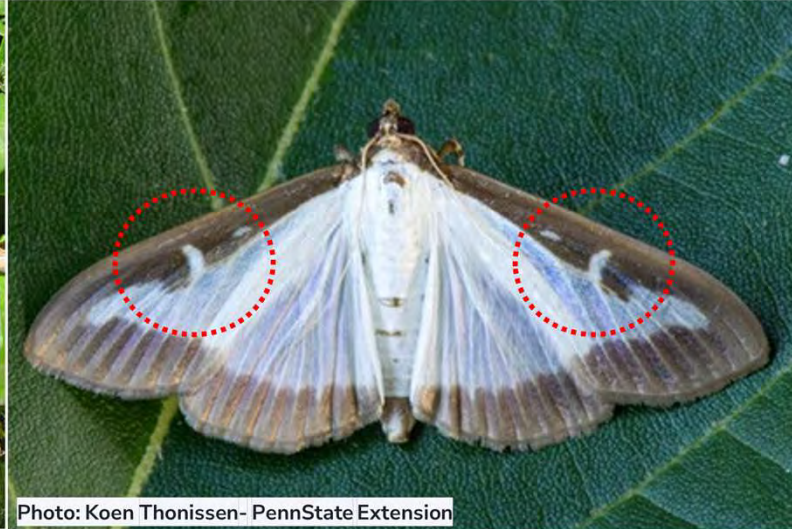
Producers interested in one-on-one support with the FSCSC program application can contact our call center at 877-508-8364 to speak directly with a USDA employee ready to offer assistance.

More Information

This fact sheet is for informational purposes only; other restrictions may apply. For more information about FSCSC, visit farmers.gov/food-safety or contact your local FSA office. To find your local FSA office, visit farmers.gov/service-locator.

Box Tree Moth (BTM) is on the move!

Box tree moth has been confirmed in
Kent County, DE - Erie County, PA - Barnstable County, MA
Plus active populations in OH, MI, NY



The caterpillars are the most damaging and easily identified stage of the Box tree moth’s lifecycle. If you see **webbing on boxwoods**, please report this to the contacts listed below.

The United States Department of Agriculture’s Animal and Plant Health Inspection Service (USDA-APHIS) has confirmed finds of BTM sporadically throughout the northeast region. The box tree moth is a federally regulated pest that primarily feeds on boxwood species (*Buxus* spp.). Box Tree Moth poses a serious threat to boxwood production, maintenance, and export.

Scan here for more resources



If you see or suspect this pest please contact:

Rutgers RCE Agent (Nursery) – Tim Waller twaller@njaes.rutgers.edu

NJDA Nursery Inspection Program Manager- Sarah Katzenbach – sarah.katzenbach@ag.nj.gov

RUTGERS

New Jersey Agricultural
Experiment Station

HAVE YOU SIGNED UP FOR **PLANT & PEST** **ADVISORY** UPDATES YET?



PLANT & PEST ADVISORY

A RUTGERS COOPERATIVE EXTENSION PUBLICATION

Scan
me
→



[HTTPS://PLANT-PEST-ADVISORY.RUTGERS.EDU/](https://plant-pest-advisory.rutgers.edu/)

WE **R** HERE WHEN YOU NEED US

Cooperating Agencies: Rutgers, The State University of New Jersey, U.S. Department of Agriculture, and County Boards of Chosen Freeholders. Rutgers Cooperative Extension, a unit of the Rutgers New Jersey Agricultural Experiment Station, is an equal opportunity program provider and employer.